

HIV Molecular Immunology: Maps of T-Helper/CD4+ Epitope Locations Plotted by Protein

Theoretical Biology & Biophysics, Los Alamos National Laboratory

June 16, 2017

All HIV T-helper/CD4+ (Th) epitopes mapped to within a region of 18 amino acids or less are indicated on the HIV protein epitope maps. The location and HLA restriction elements of Th epitopes are indicated on protein sequences of HXB2. These maps are meant to provide the relative location of defined epitopes on a given protein, but the HXB2 sequence may not actually carry the epitope of interest, as it may vary relative to the sequence for which the epitope was defined. Epitopes with identical boundaries and HLA fields are included in the maps only once. If one laboratory determines HLA presenting molecules at the serotype level (example: A2) and another at the genotype level (example: A*0201) both will be included in the map. MHC specificities are indicative of the host species; when no MHC presenting molecule is defined, the host species is noted.

1 Gag T-Helper/CD4+ Epitope Map

Figure 1: Gag T-Helper/CD4+ Map aa 1–100

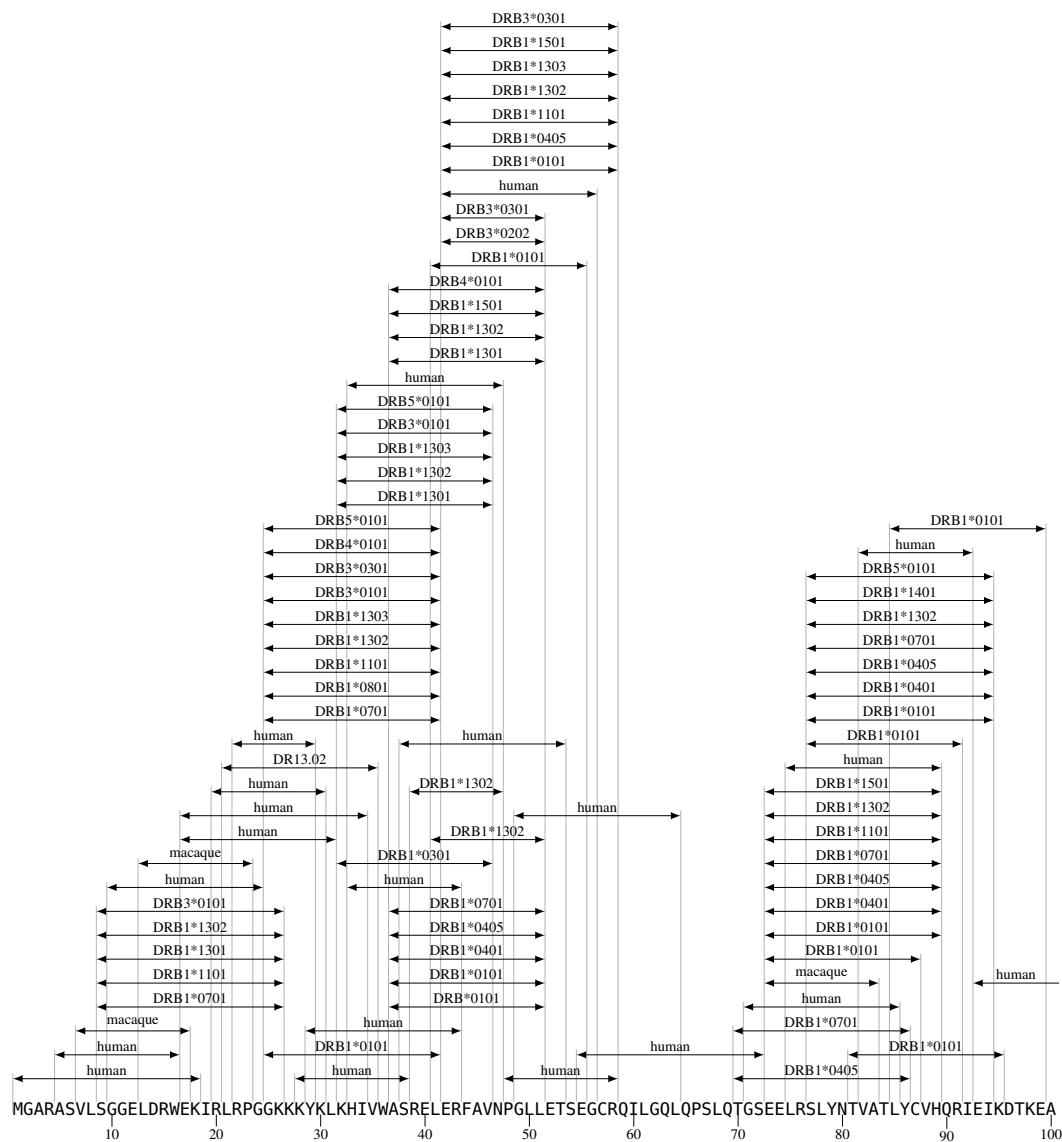


Figure 2: Gag T-Helper/CD4+ Map aa 101–200

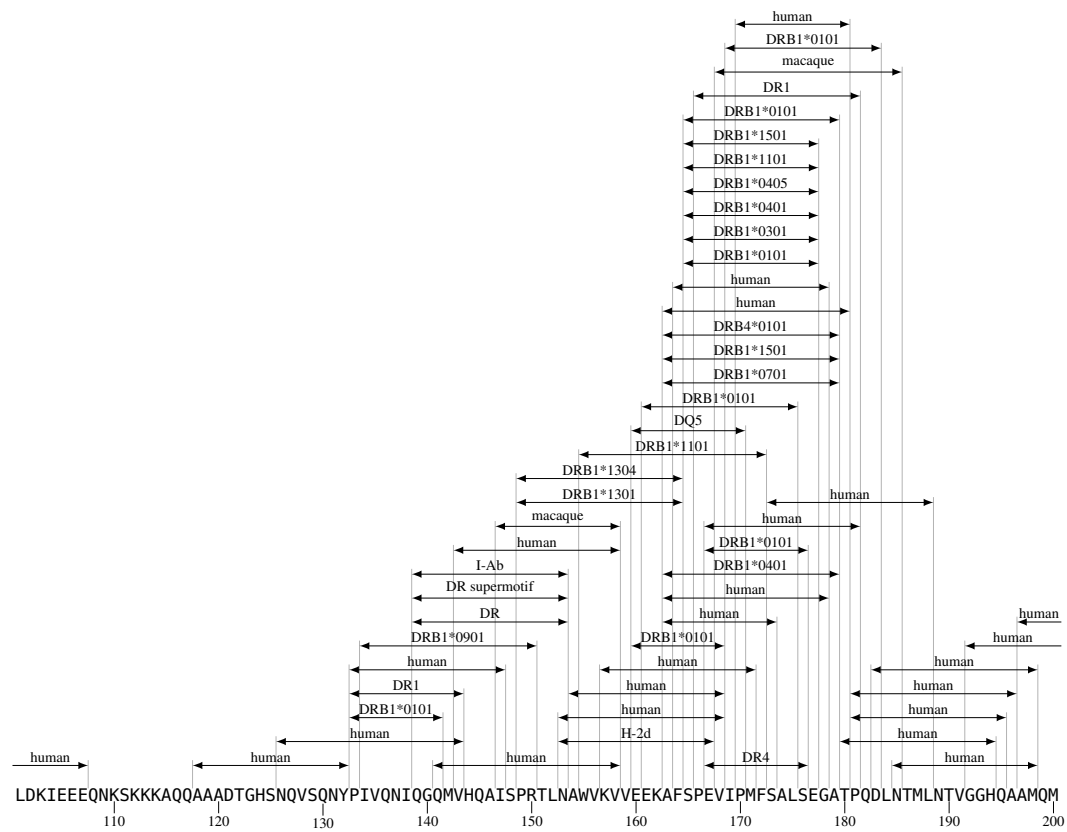


Figure 3: Gag T-Helper/CD4+ Map aa 201–300

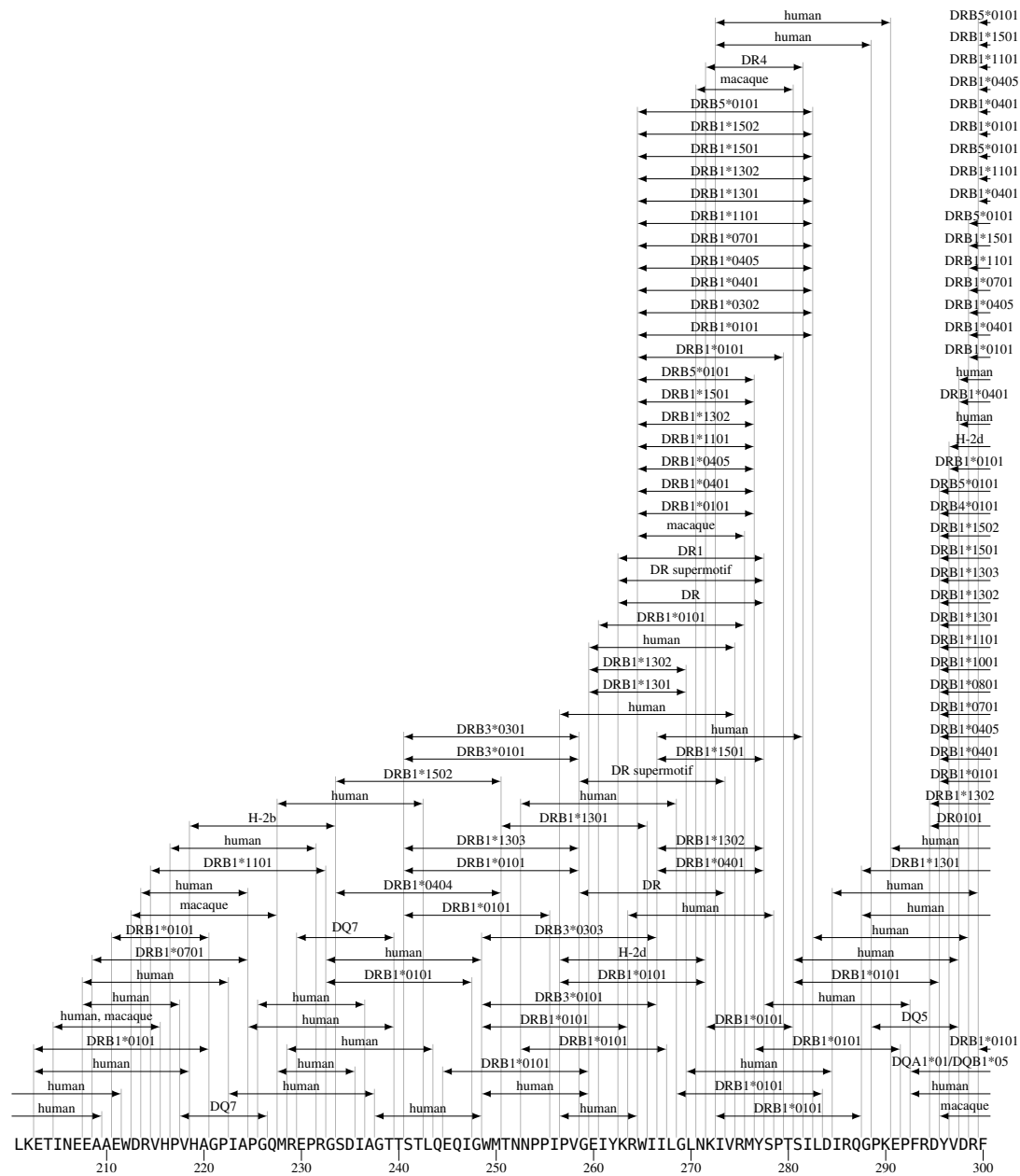


Figure 4: Gag T-Helper/CD4+ Map aa 301–400

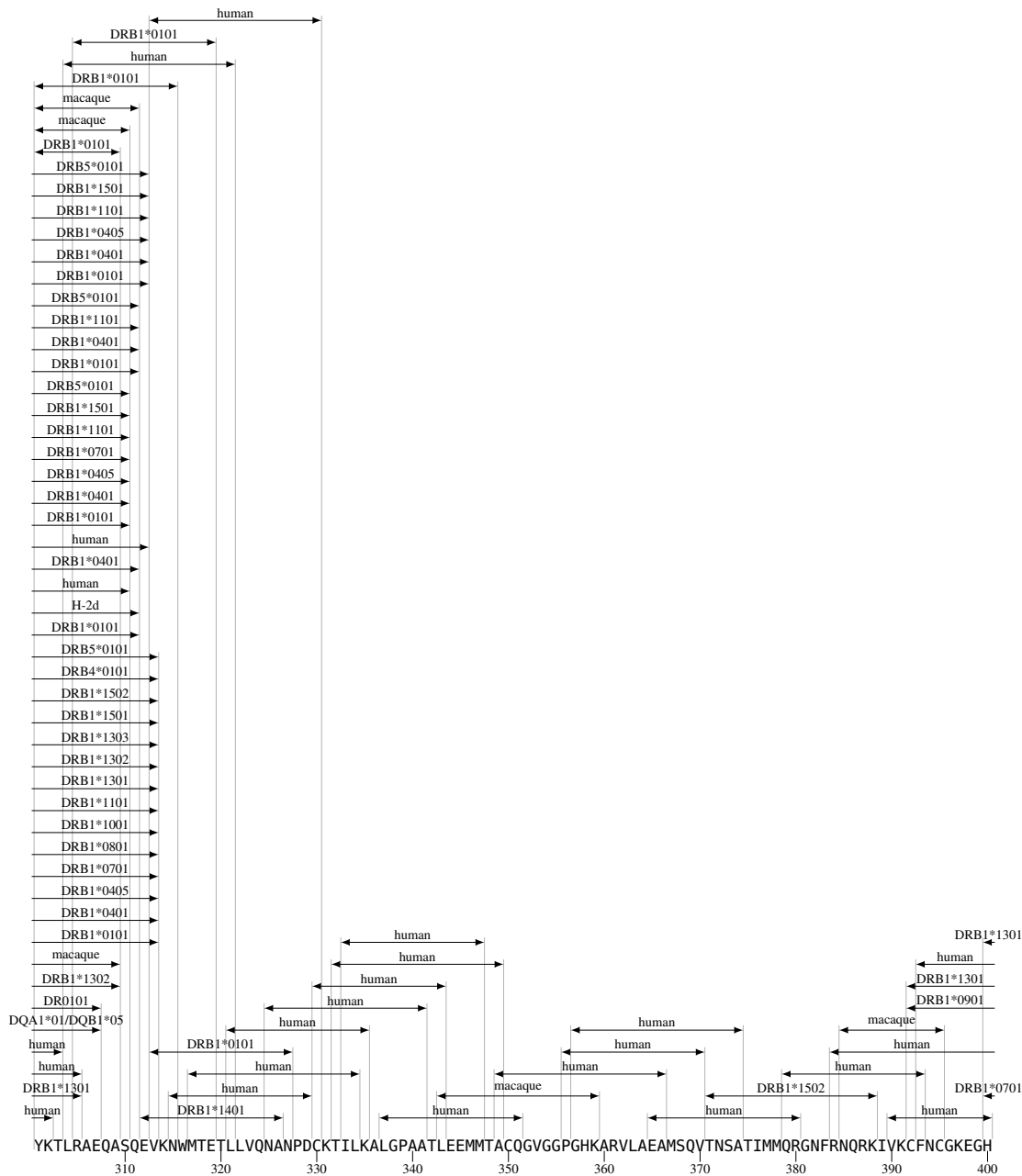
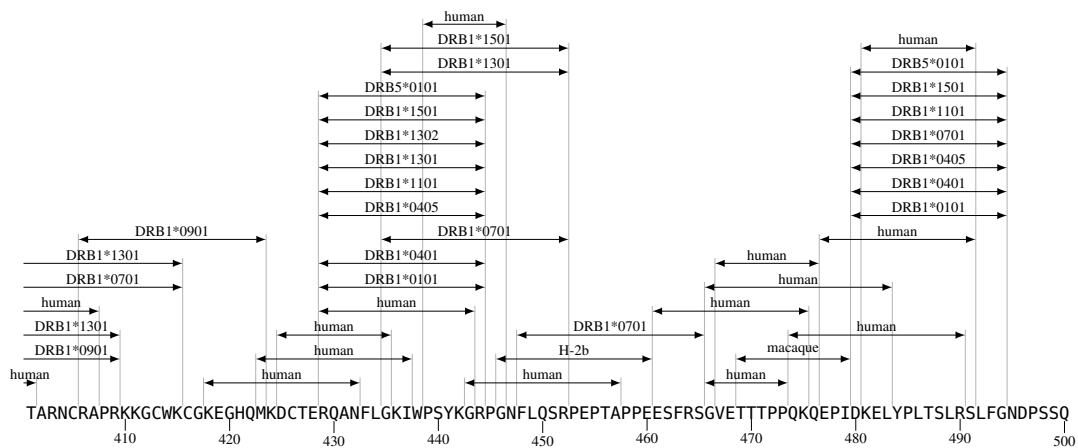


Figure 5: Gag T-Helper/CD4+ Map aa 401–500



2 Pol T-Helper/CD4+ Epitope Map

Figure 6: Pol T-Helper/CD4+ Map aa 1–100

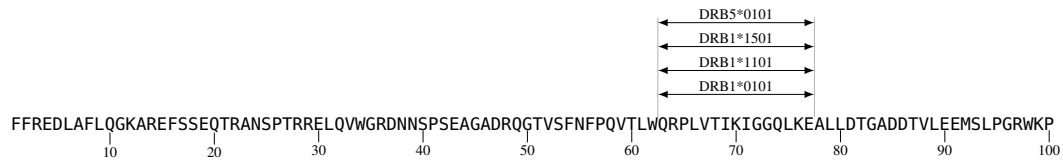


Figure 7: Pol T-Helper/CD4+ Map aa 101–200

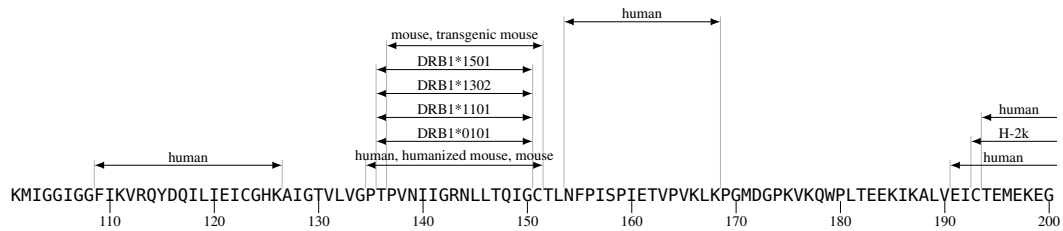


Figure 8: Pol T-Helper/CD4+ Map aa 201–300

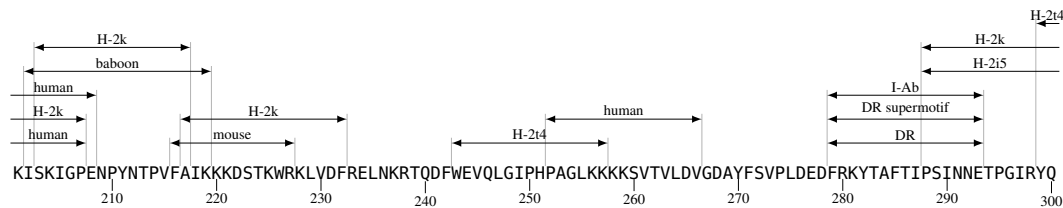


Figure 9: Pol T-Helper/CD4+ Map aa 301–400

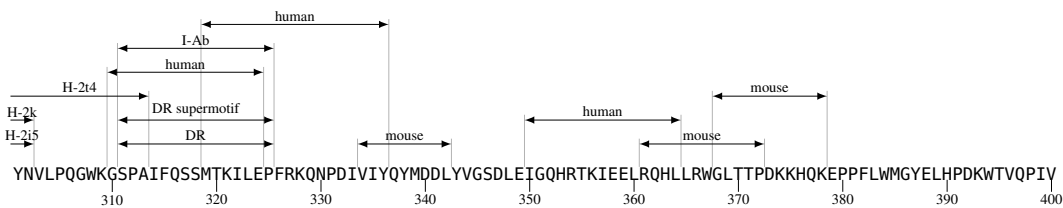


Figure 10: Pol T-Helper/CD4+ Map aa 401–500

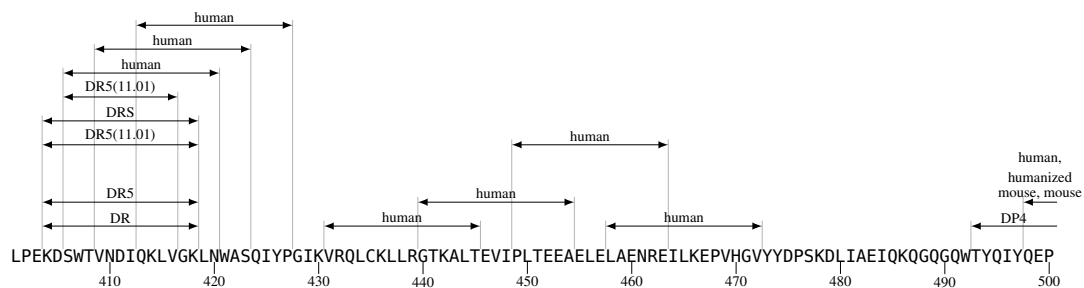


Figure 11: Pol T-Helper/CD4+ Map aa 501–600

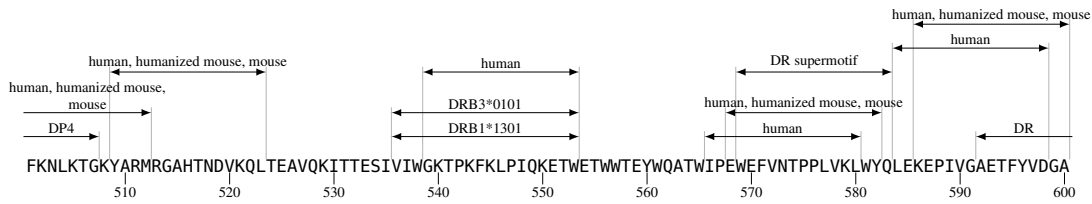


Figure 12: Pol T-Helper/CD4+ Map aa 601–700

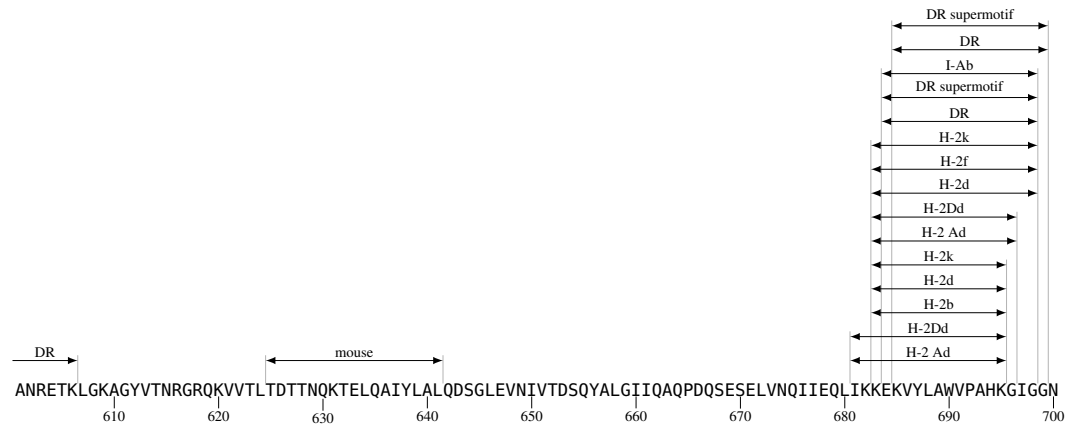


Figure 13: Pol T-Helper/CD4+ Map aa 701–800

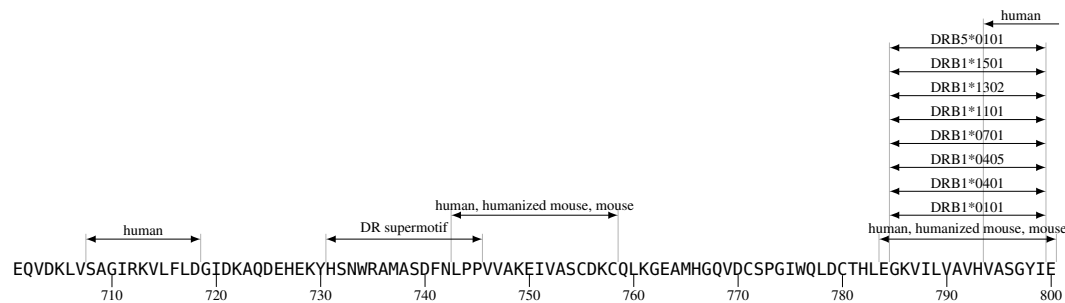


Figure 14: Pol T-Helper/CD4+ Map aa 801–900

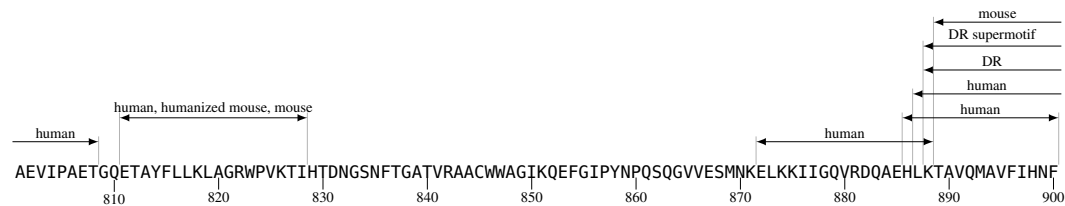


Figure 15: Pol T-Helper/CD4+ Map aa 901–1000

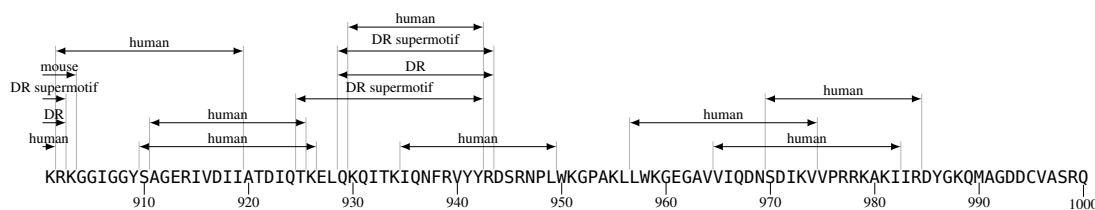


Figure 16: Pol T-Helper/CD4+ Map aa 1001–1003

DED
1003

3 Vif T-Helper/CD4+ Epitope Map

Figure 17: Vif T-Helper/CD4+ Map aa 1–100

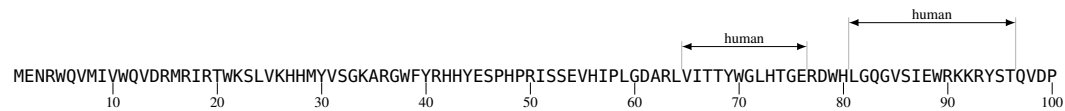
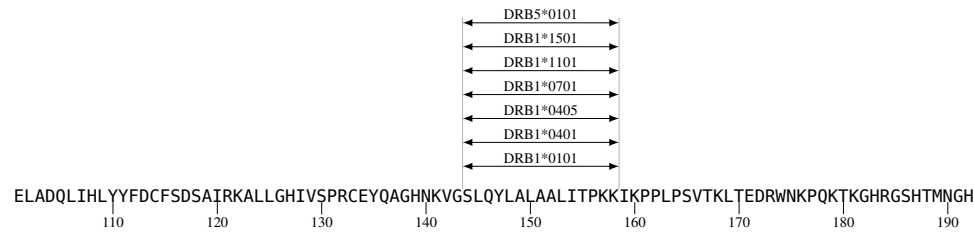
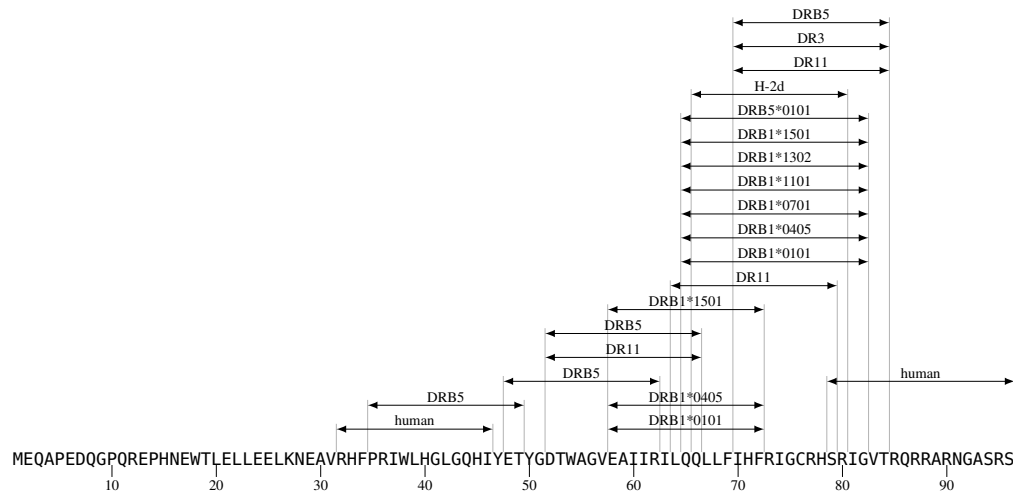


Figure 18: Vif T-Helper/CD4+ Map aa 101–192



4 Vpr T-Helper/CD4+ Epitope Map

Figure 19: Vpr T-Helper/CD4+ Map aa 1–96



5 Tat T-Helper/CD4+ Epitope Map

Figure 20: Tat T-Helper/CD4+ Map aa 1–100

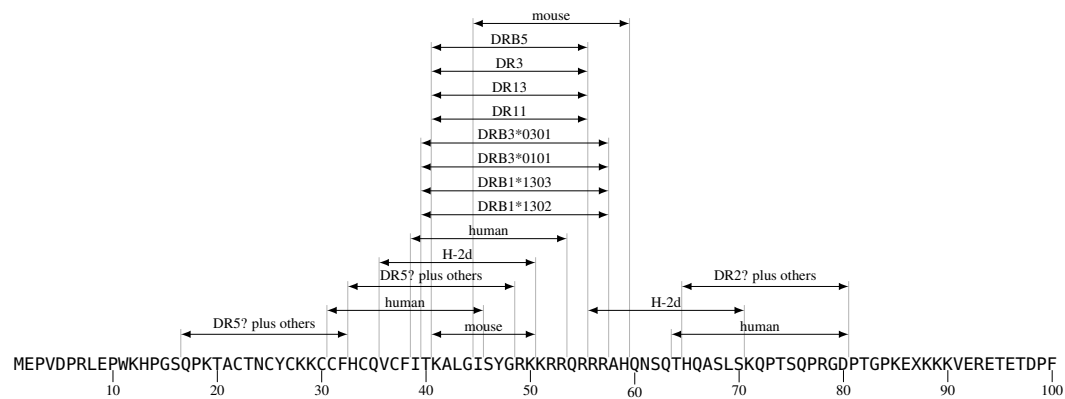


Figure 21: Tat T-Helper/CD4+ Map aa 101–101

D
101

6 Rev T-Helper/CD4+ Epitope Map

Figure 22: Rev T-Helper/CD4+ Map aa 1–100

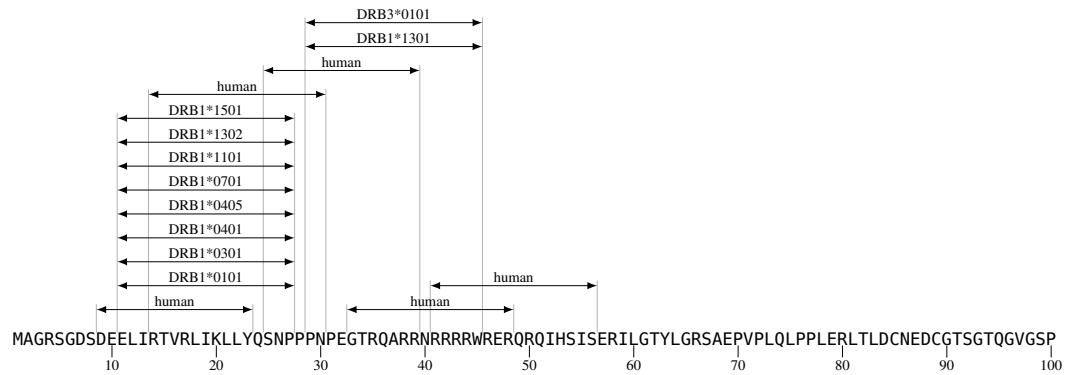
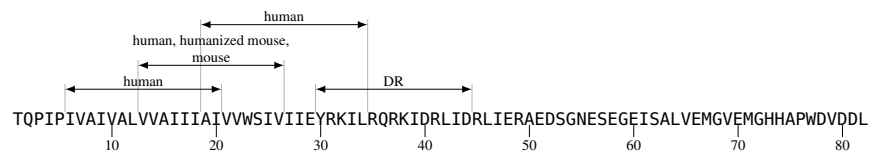


Figure 23: Rev T-Helper/CD4+ Map aa 101–116

QILVESPTVLESGTKE
110

7 Vpu T-Helper/CD4+ Epitope Map

Figure 24: Vpu T-Helper/CD4+ Map aa 1–82



8 gp160 T-Helper/CD4+ Epitope Map

Figure 25: gp160 T-Helper/CD4+ Map aa 1–100

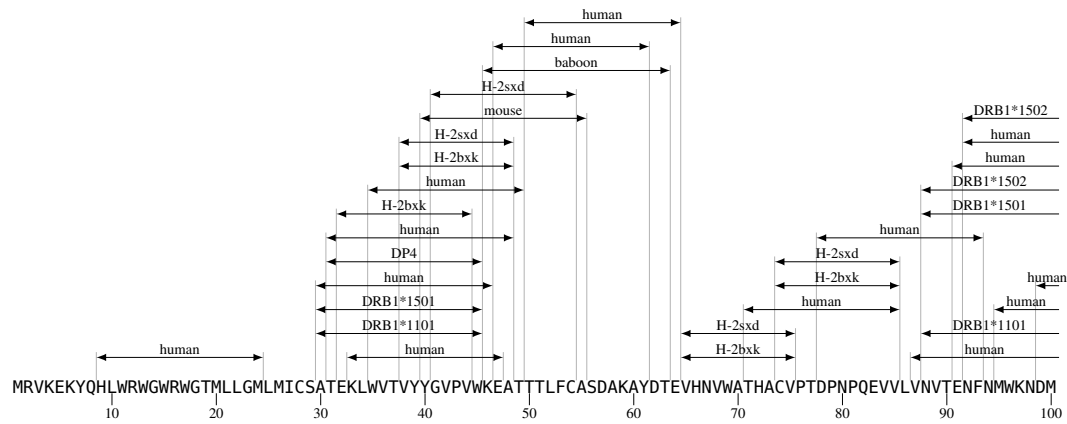


Figure 26: gp160 T-Helper/CD4+ Map aa 101–200

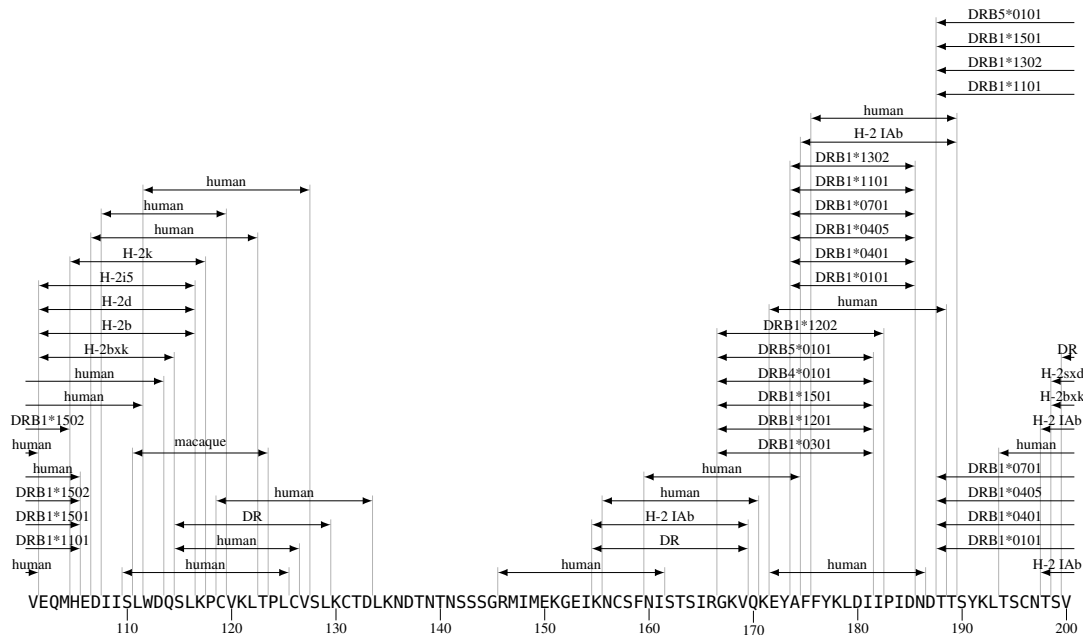


Figure 27: gp160 T-Helper/CD4+ Map aa 201–300

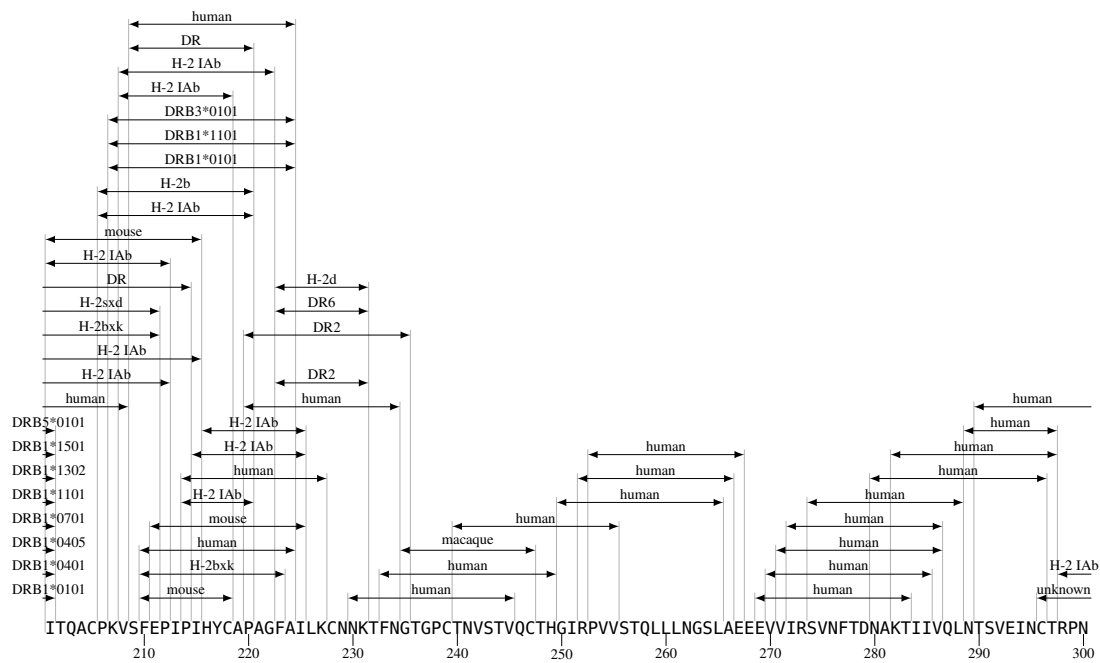


Figure 28: gp160 T-Helper/CD4+ Map aa 301–400

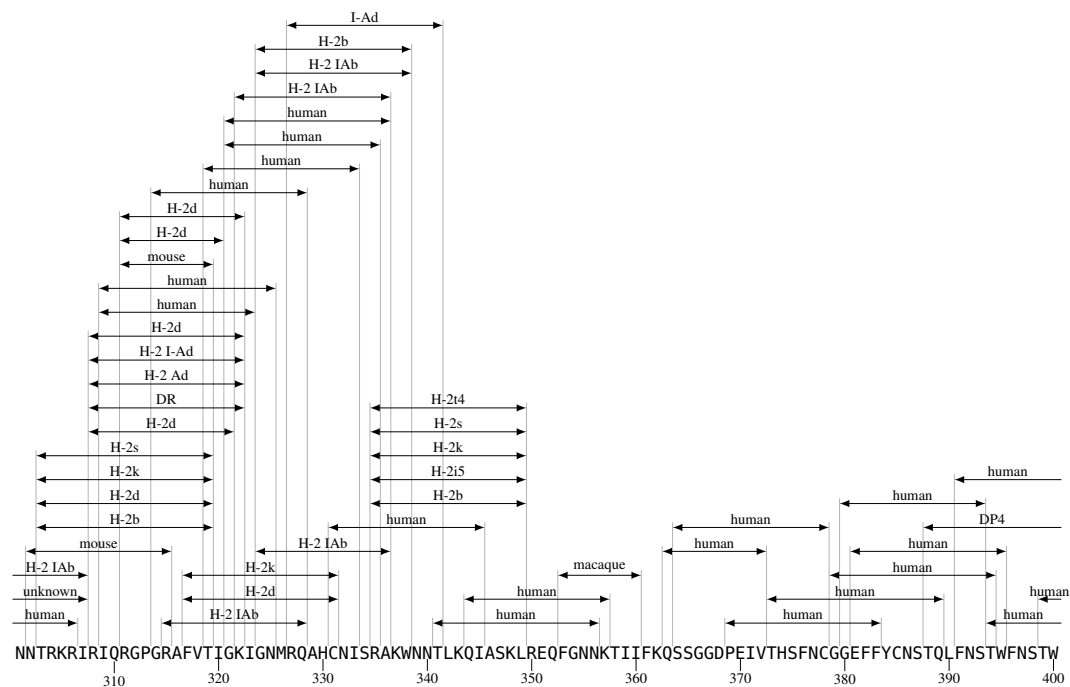


Figure 29: gp160 T-Helper/CD4+ Map aa 401–500

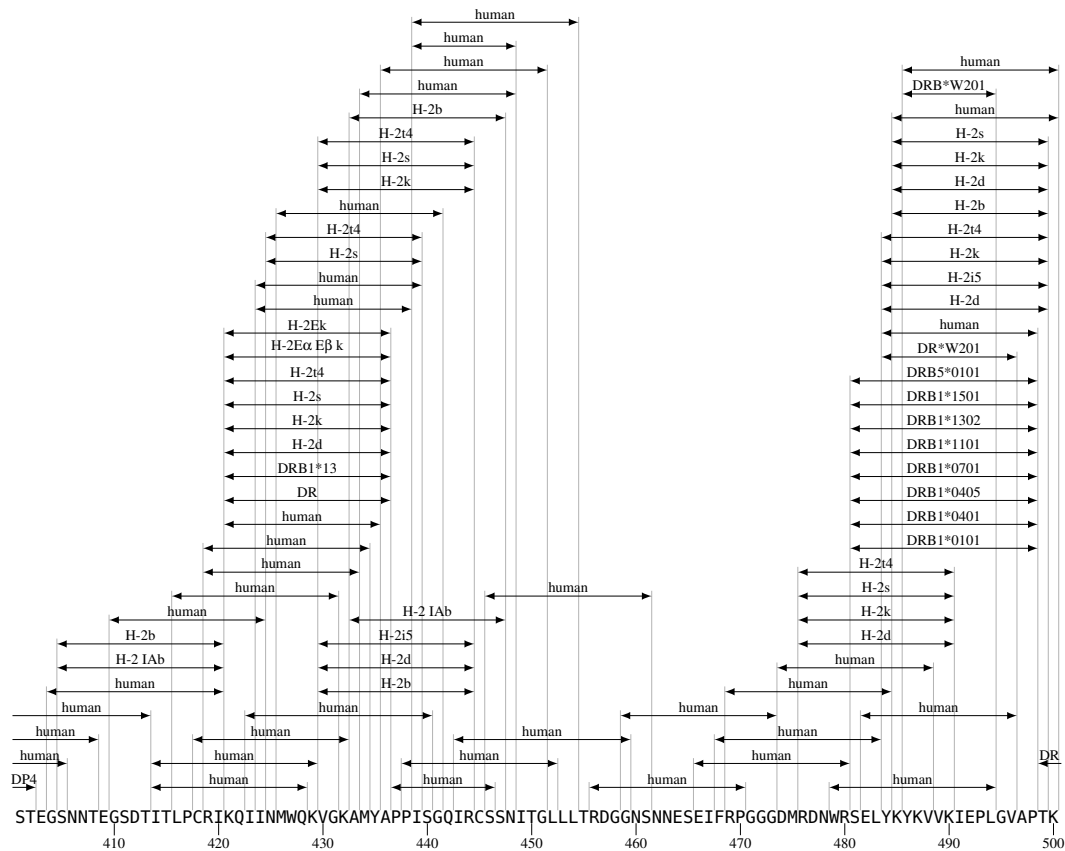


Figure 30: gp160 T-Helper/CD4+ Map aa 501–600

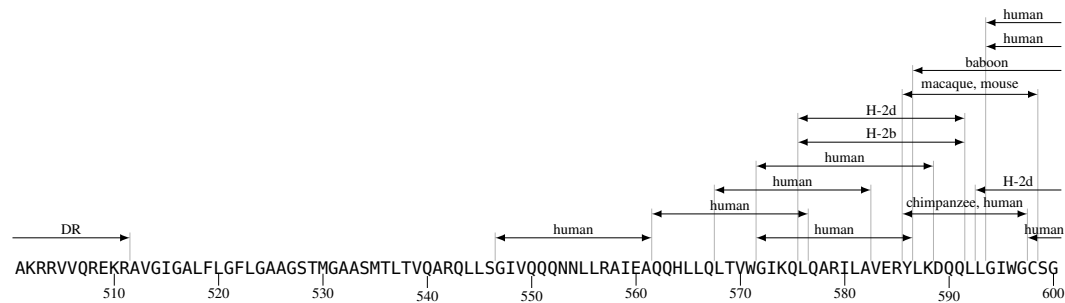


Figure 31: gp160 T-Helper/CD4+ Map aa 601–700

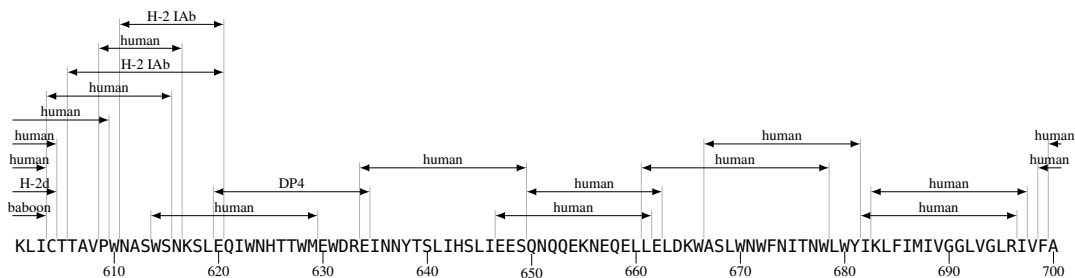


Figure 32: gp160 T-Helper/CD4+ Map aa 701–800

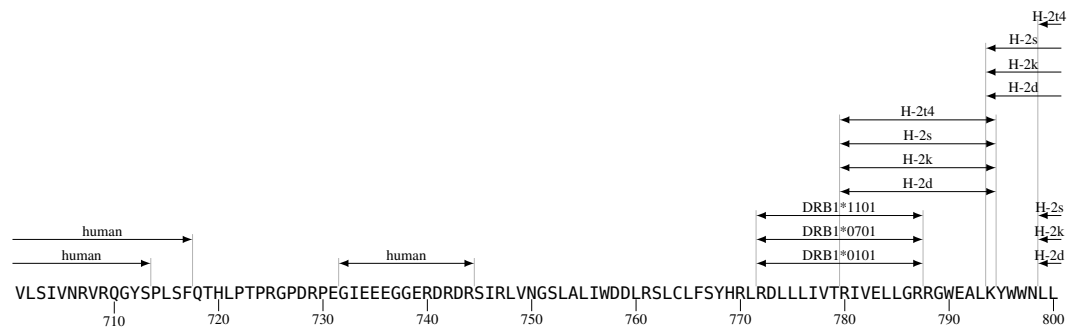
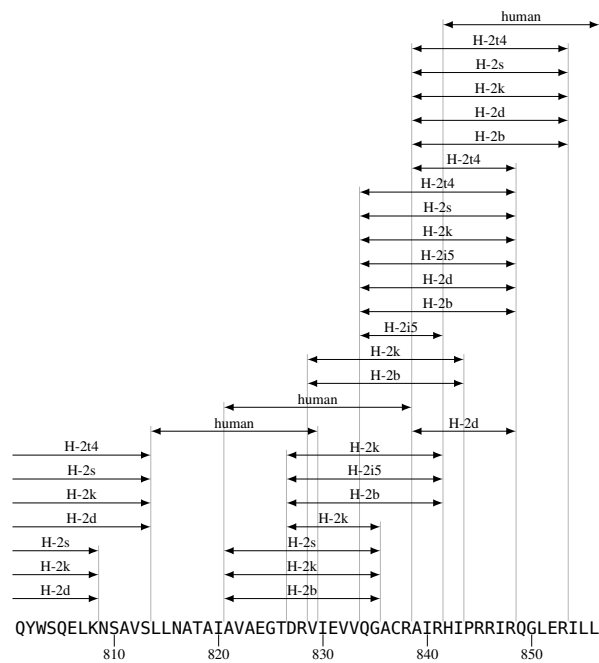


Figure 33: gp160 T-Helper/CD4+ Map aa 801–856



9 Nef T-Helper/CD4+ Epitope Map

Figure 34: Nef T-Helper/CD4+ Map aa 1–100

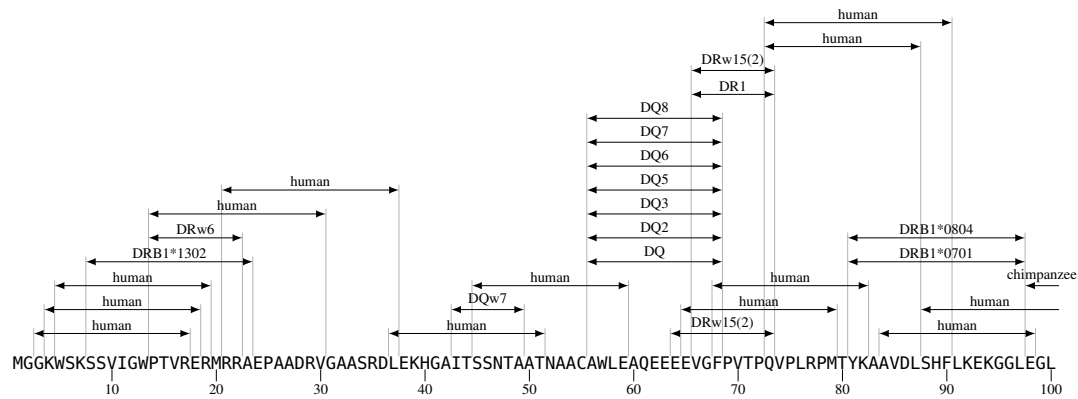


Figure 35: Nef T-Helper/CD4+ Map aa 101–200

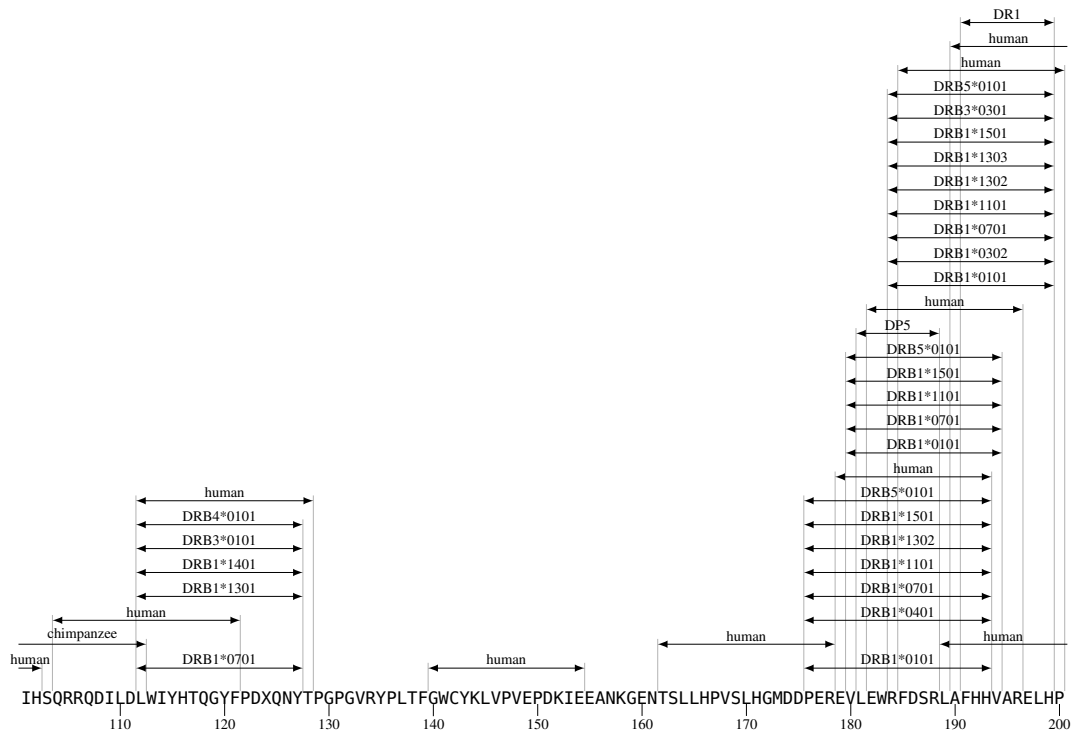


Figure 36: Nef T-Helper/CD4+ Map aa 201–206

