

# HIV Molecular Immunology: Maps of CTL/CD8+ Epitope Locations Plotted by Protein

Theoretical Biology & Biophysics, Los Alamos National Laboratory

April 6, 2016

All HIV CTL/CD8+ epitopes mapped to within a region of 14 amino acids or less are indicated on the HIV protein epitope maps. The location and HLA restriction elements of CTL/CD8+ epitopes are indicated on protein sequences of HXB2. These maps are meant to provide the relative location of defined epitopes on a given protein, but the HXB2 sequence may not actually carry the epitope of interest, as it may vary relative to the sequence for which the epitope was defined. Epitopes with identical boundaries and HLA fields are included in the maps only once. If one laboratory determines HLA presenting molecules at the serotype level (example: A2) and another at the genotype level (example: A\*0201) both will be included in the map. MHC specificities are indicative of the host species; when no MHC presenting molecule is defined, the host species is noted.

## 1 Gag CTL/CD8+ Epitope Map

**Figure 1: Gag CTL/CD8+ Map aa 1-100 1/2**

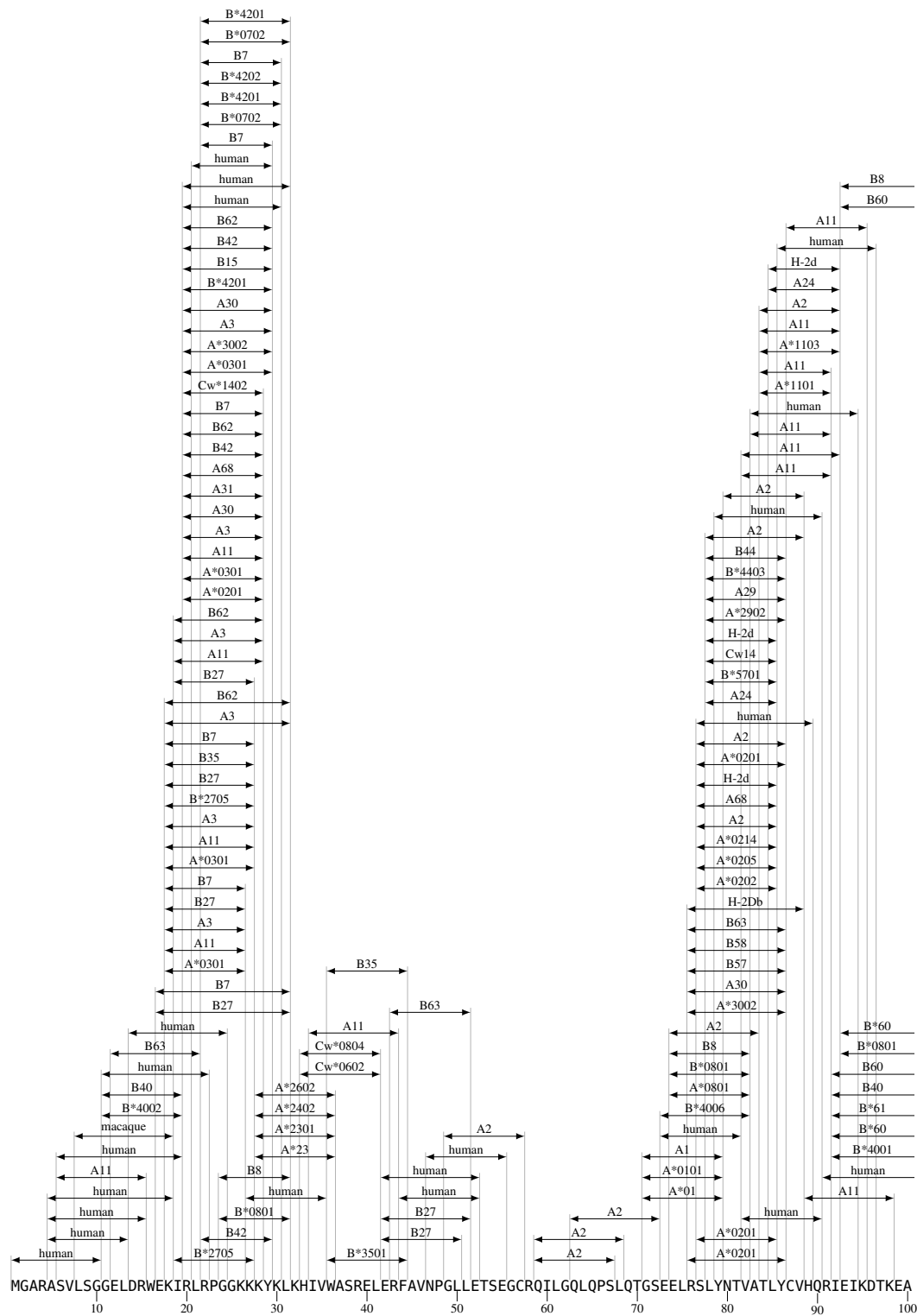
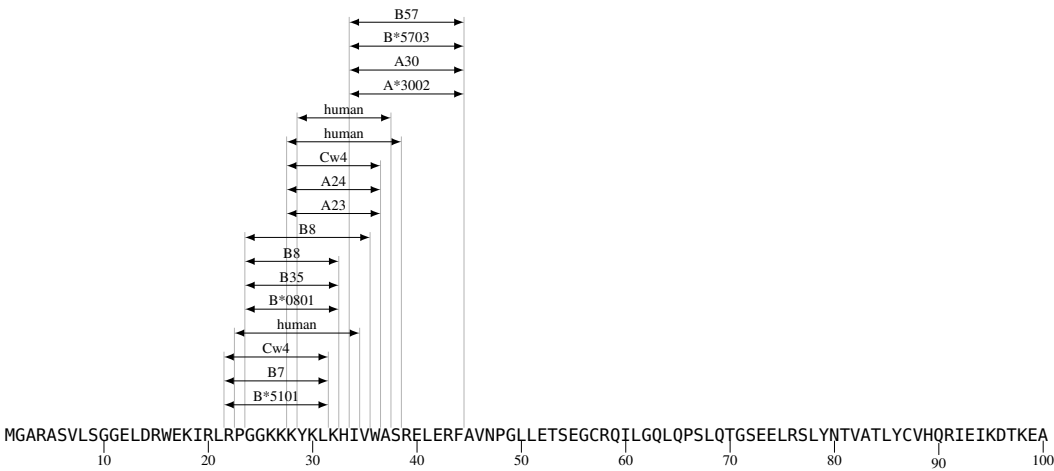


Figure 2: Gag CTL/CD8+ Map aa 1–100 2/2



**Figure 3: Gag CTL/CD8+ Map aa 101–200 1/2**

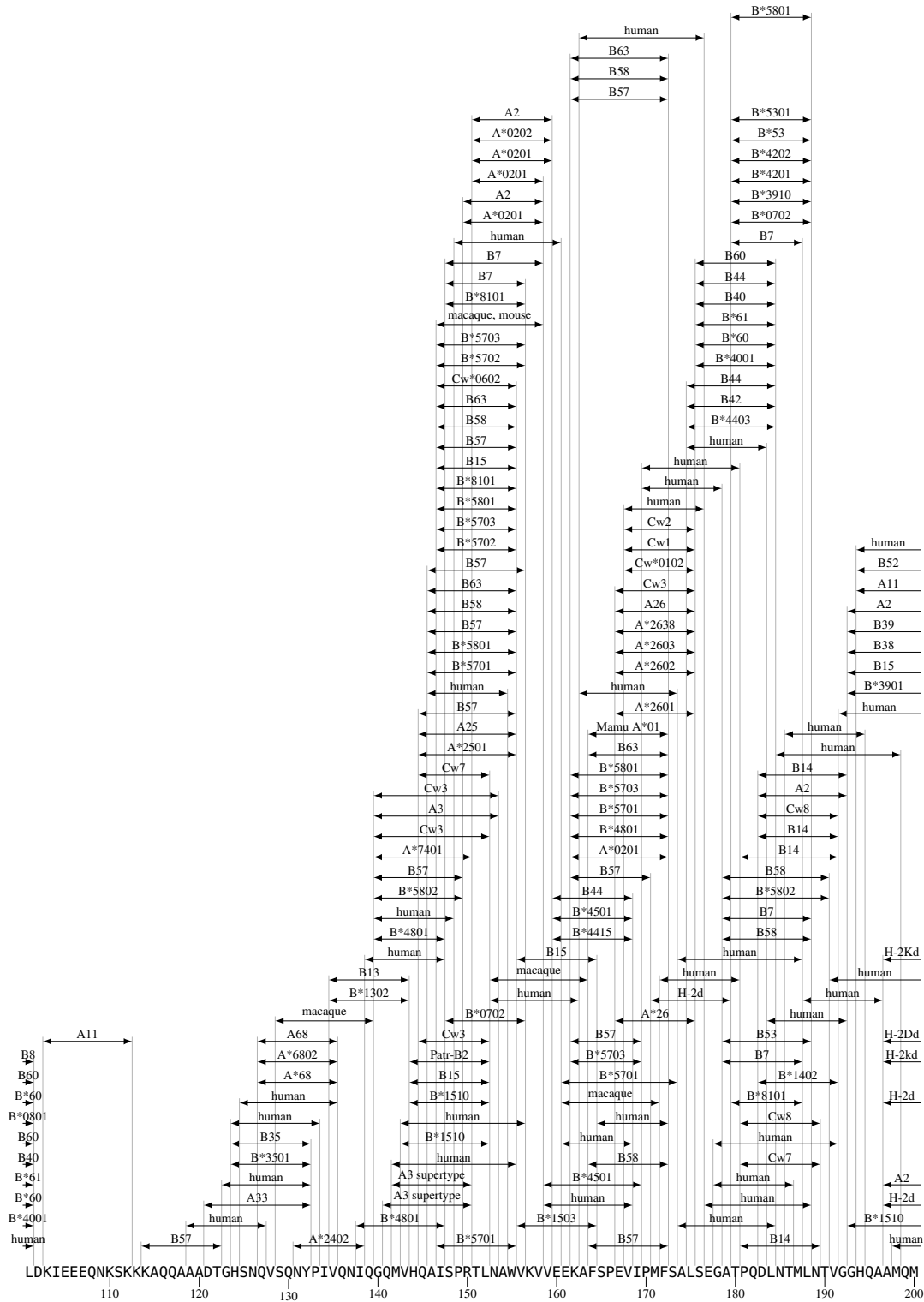


Figure 4: Gag CTL/CD8+ Map aa 101–200 2/2



**Figure 5: Gag CTL/CD8+ Map aa 201–300 1/2**

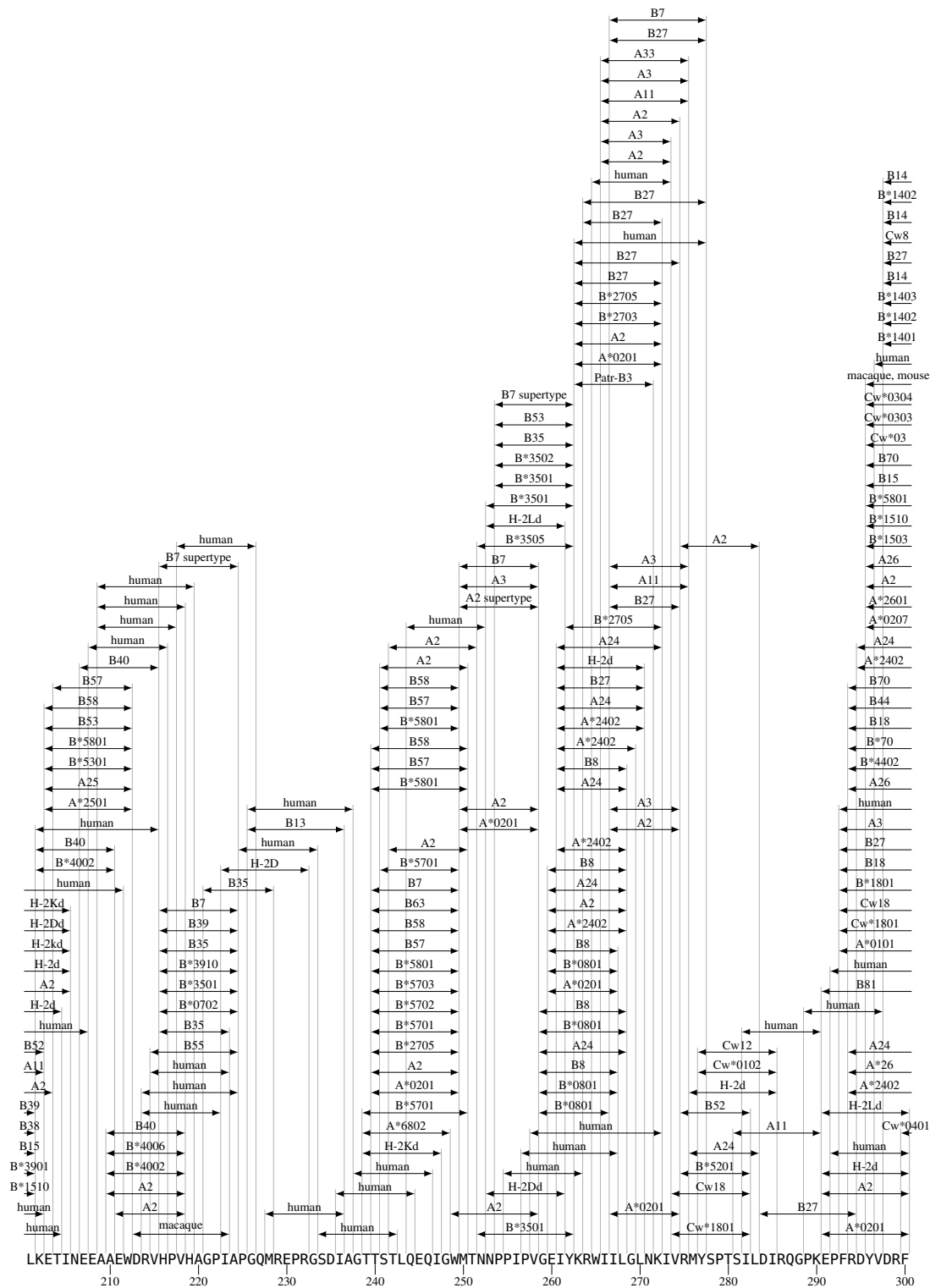
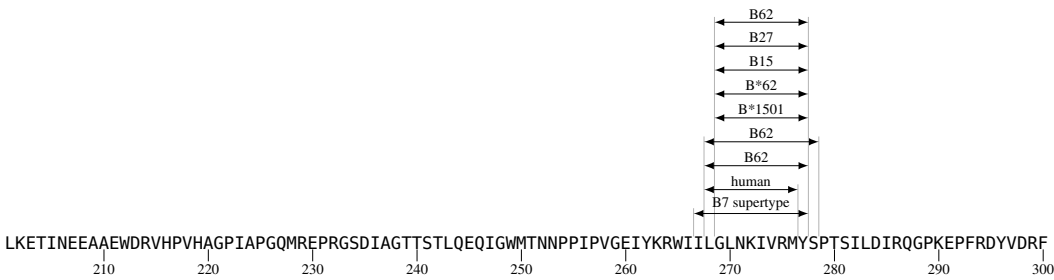
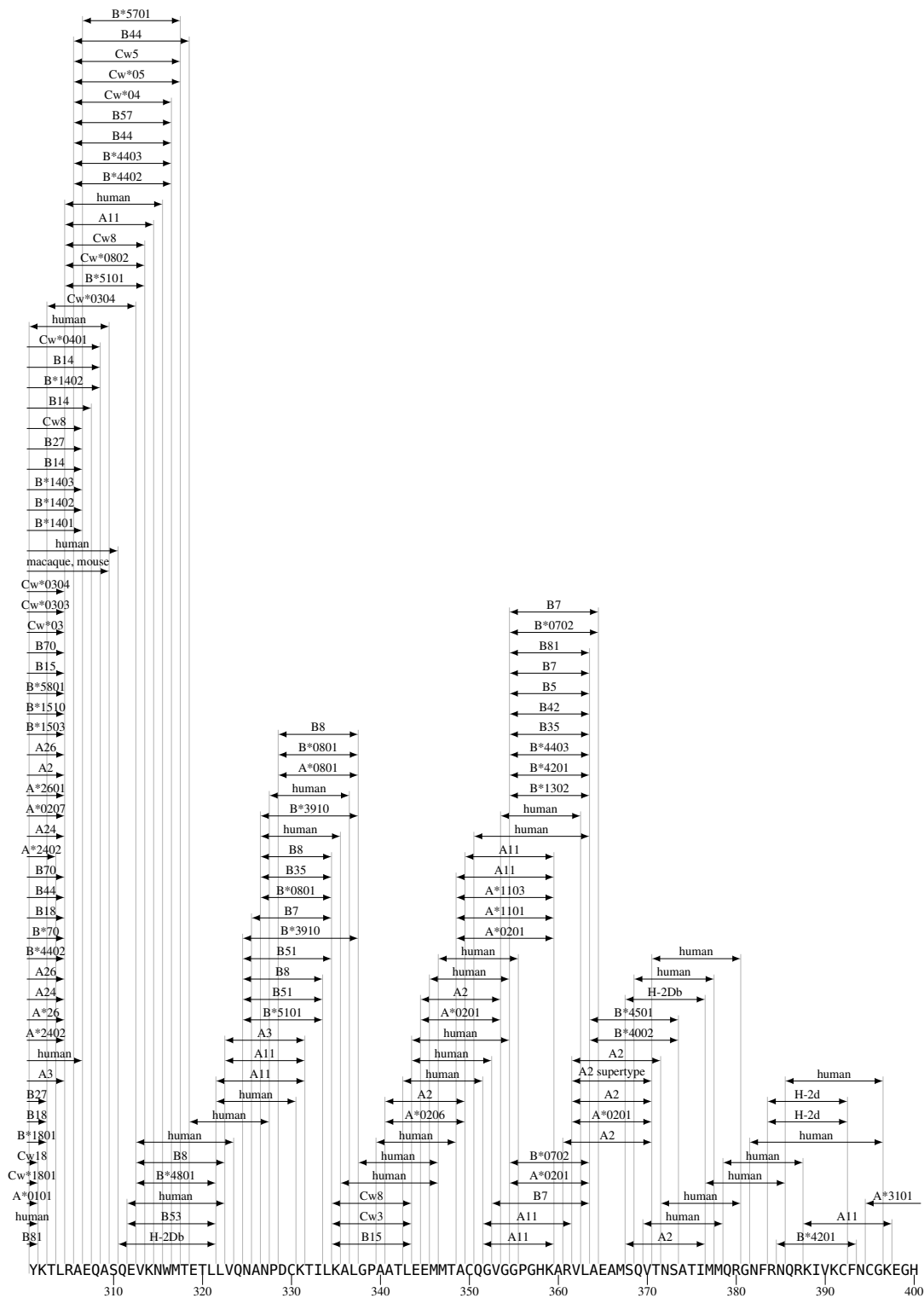


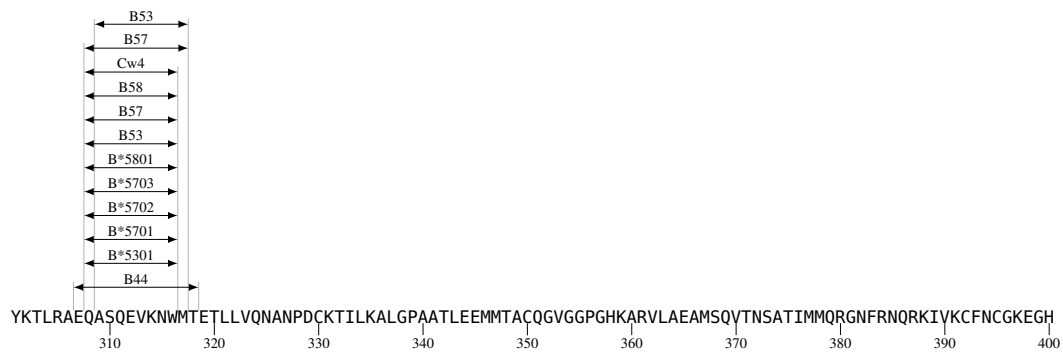
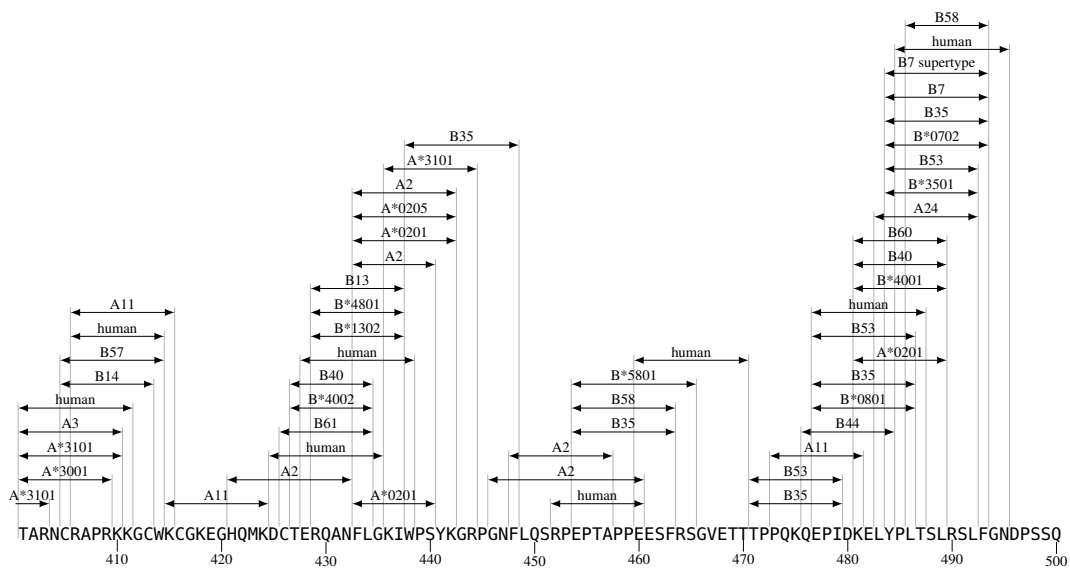
Figure 6: Gag CTL/CD8+ Map aa 201–300 2/2



**Figure 7: Gag CTL/CD8+ Map aa 301–400 1/2**

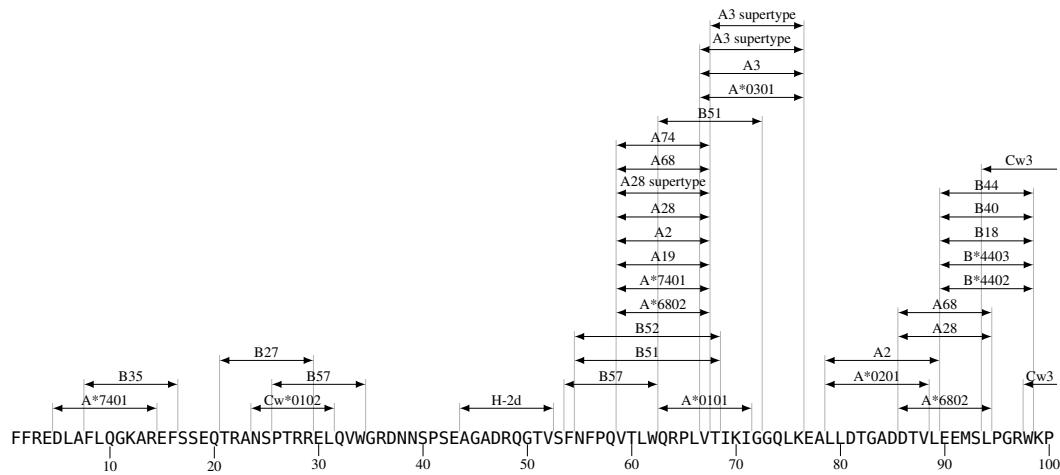




**Figure 8: Gag CTL/CD8+ Map aa 301–400 2/2****Figure 9: Gag CTL/CD8+ Map aa 401–500**

## 2 Pol CTL/CD8+ Epitope Map

**Figure 10:** Pol CTL/CD8+ Map aa 1–100



**Figure 11: Pol CTL/CD8+ Map aa 101–200**

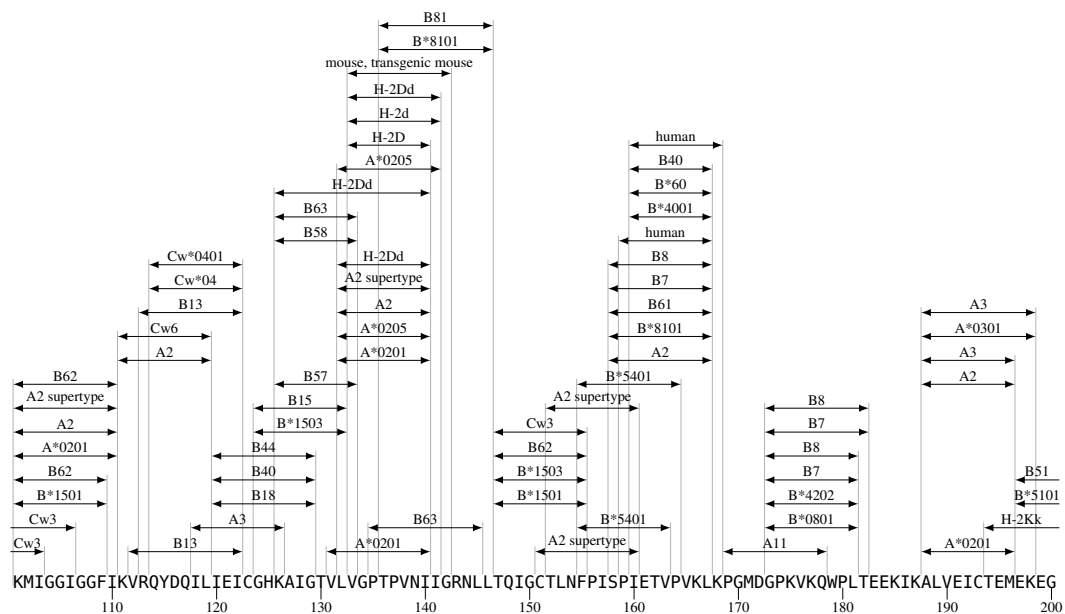


Figure 12: Pol CTL/CD8+ Map aa 201–300

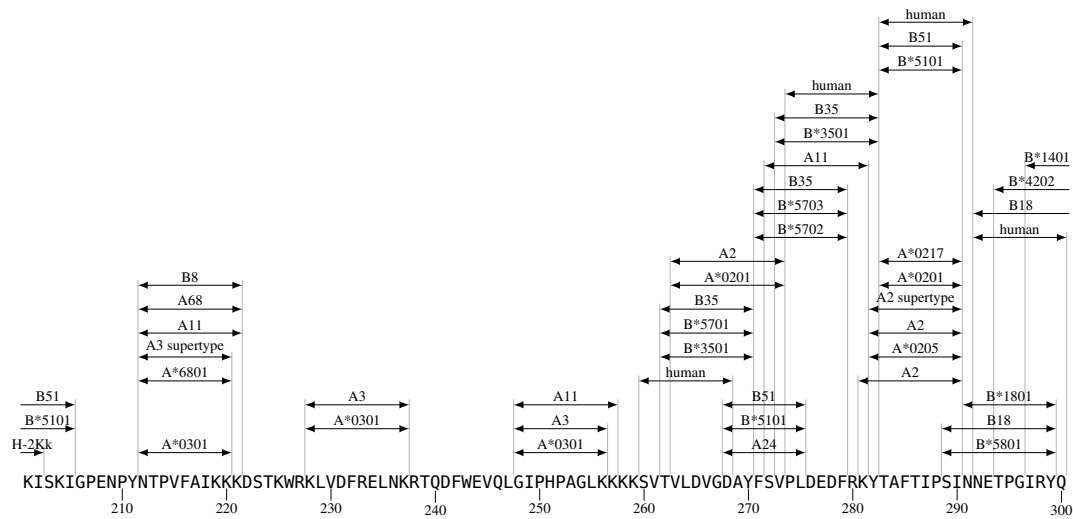


Figure 13: Pol CTL/CD8+ Map aa 301–400

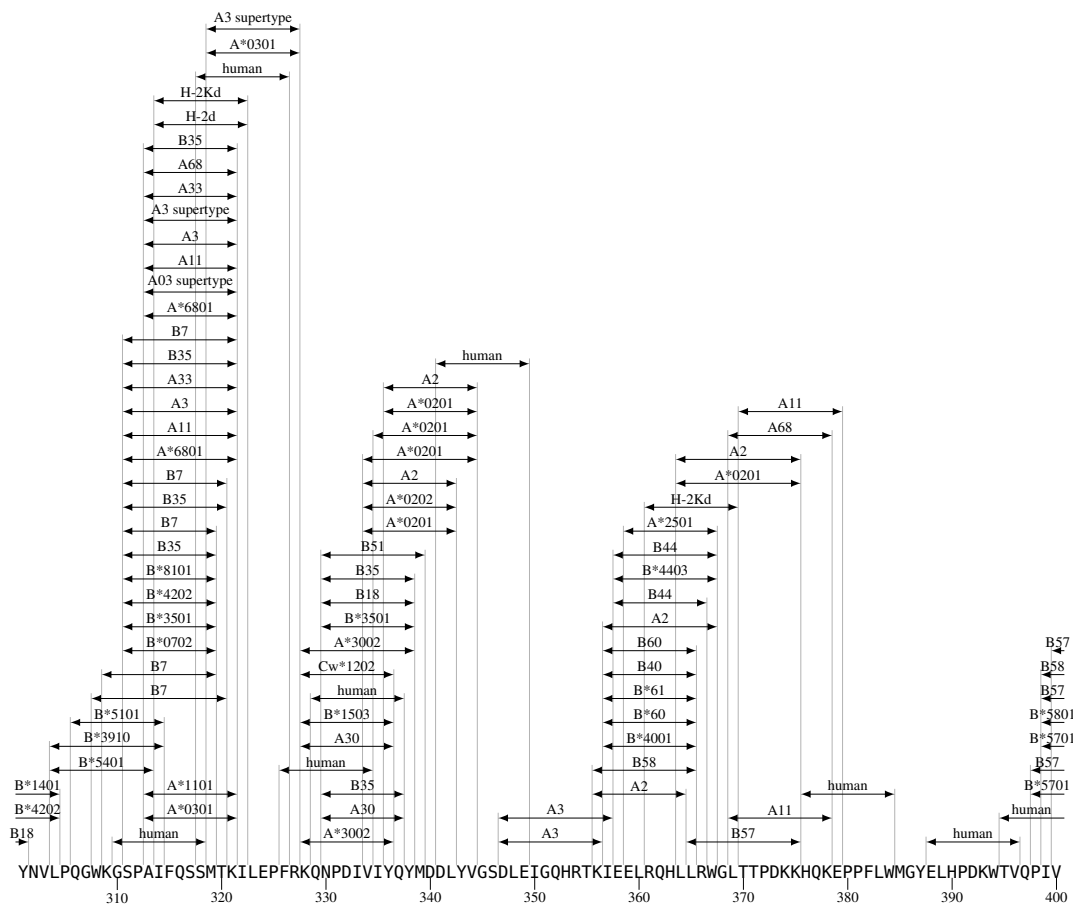


Figure 14: Pol CTL/CD8+ Map aa 401–500

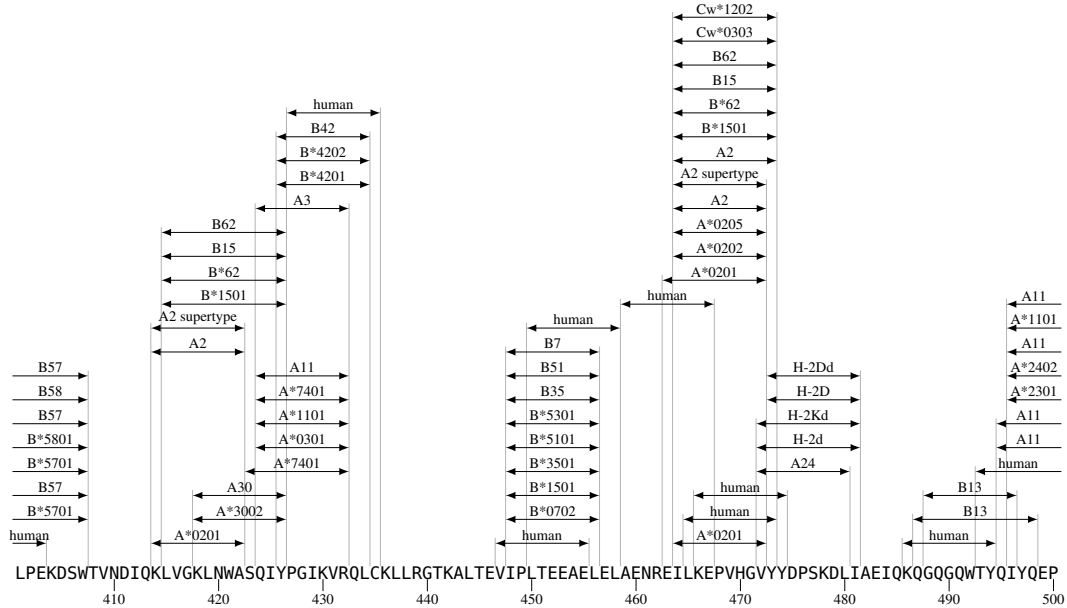


Figure 15: Pol CTL/CD8+ Map aa 501–600

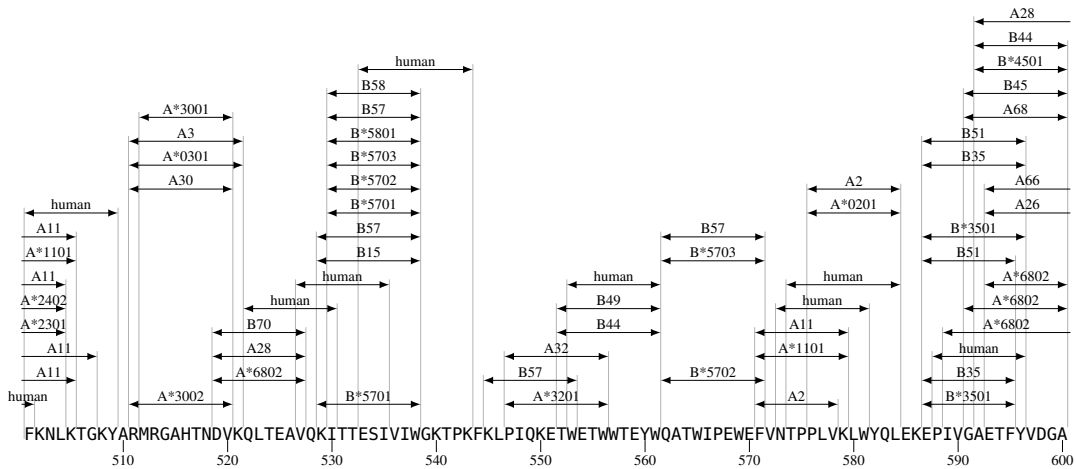
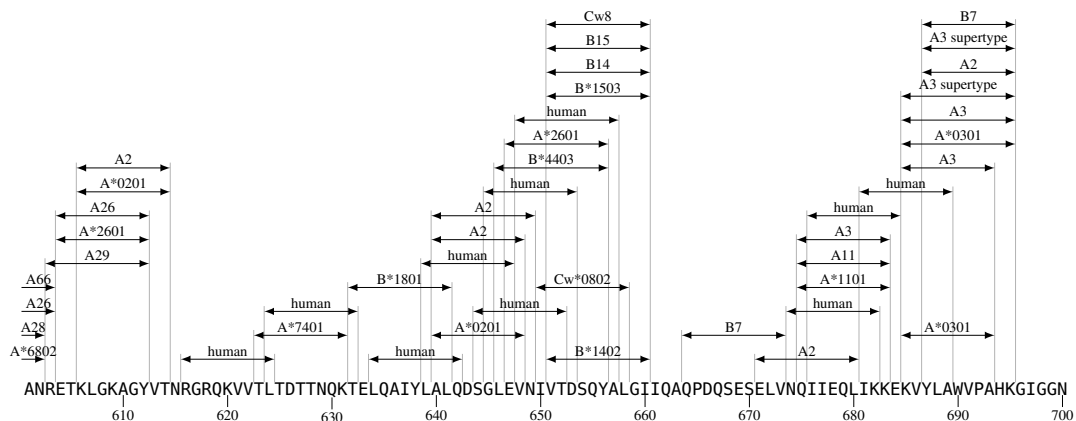
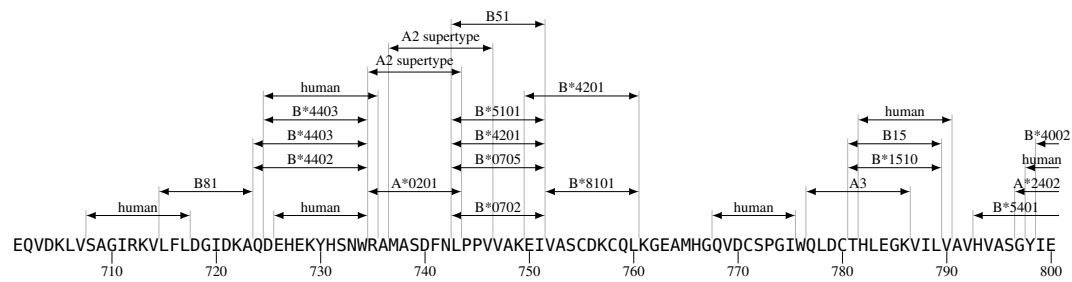


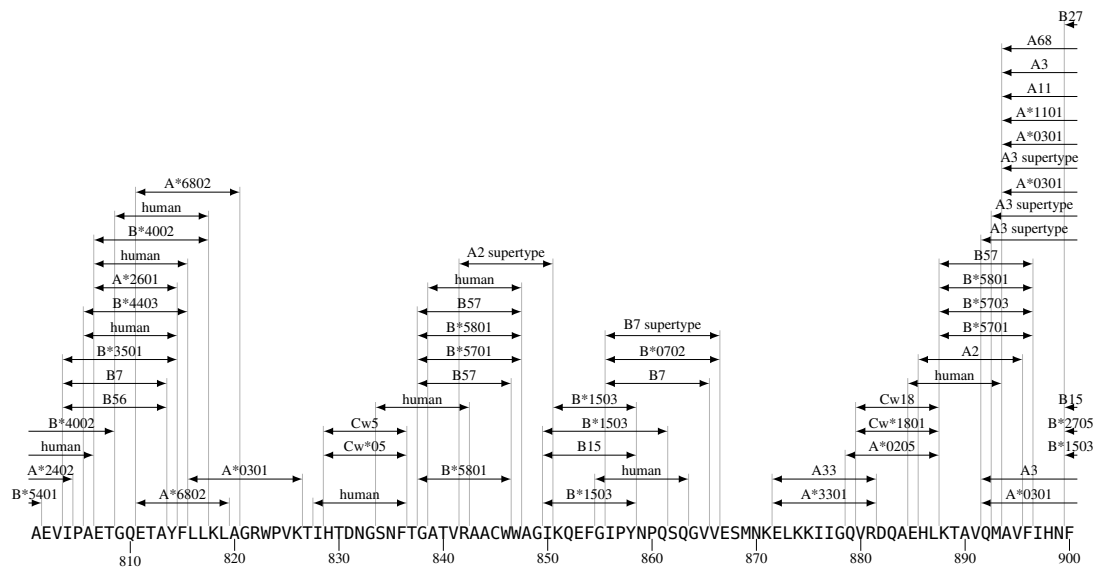
Figure 16: Pol CTL/CD8+ Map aa 601–700



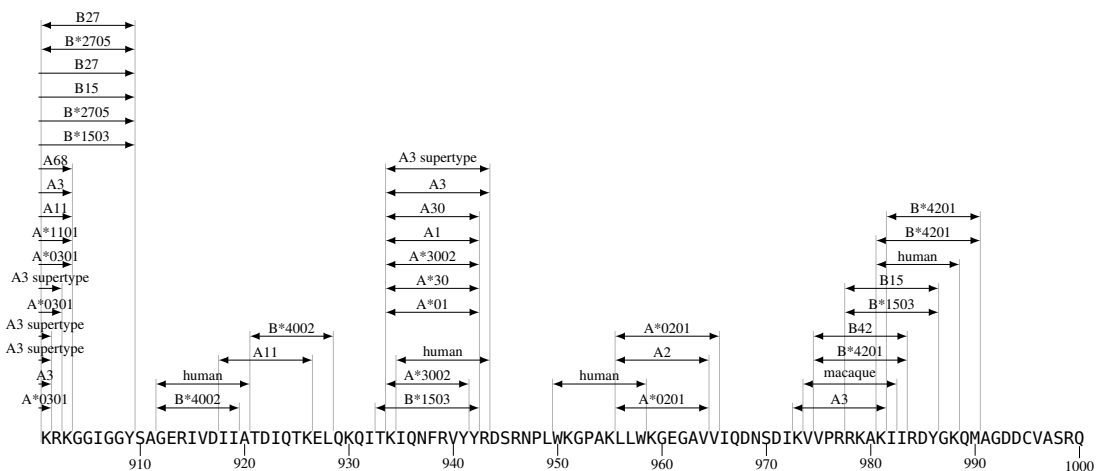
**Figure 17: Pol CTL/CD8+ Map aa 701–800**



**Figure 18:** Pol CTL/CD8+ Map aa 801–900



**Figure 19: Pol CTL/CD8+ Map aa 901–1000**

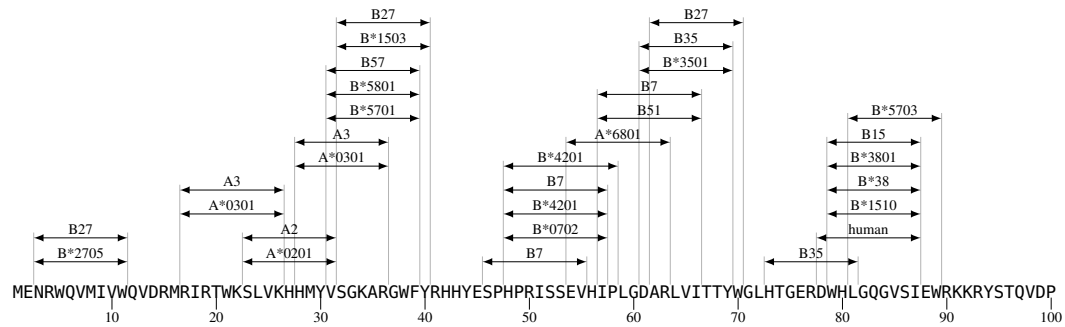


**Figure 20:** Pol CTL/CD8+ Map aa 1001–1003

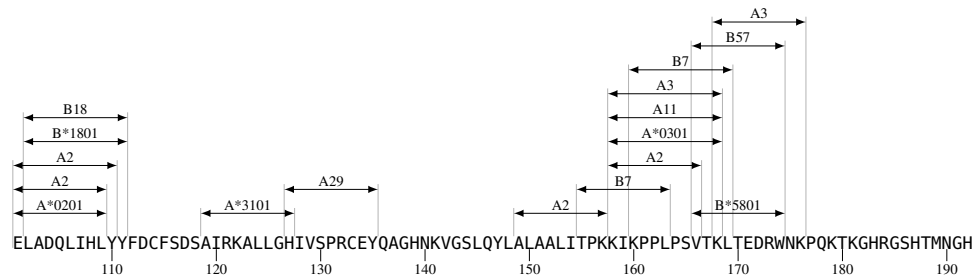
DED  
1003

### 3 Vif CTL/CD8+ Epitope Map

**Figure 21:** Vif CTL/CD8+ Map aa 1–100

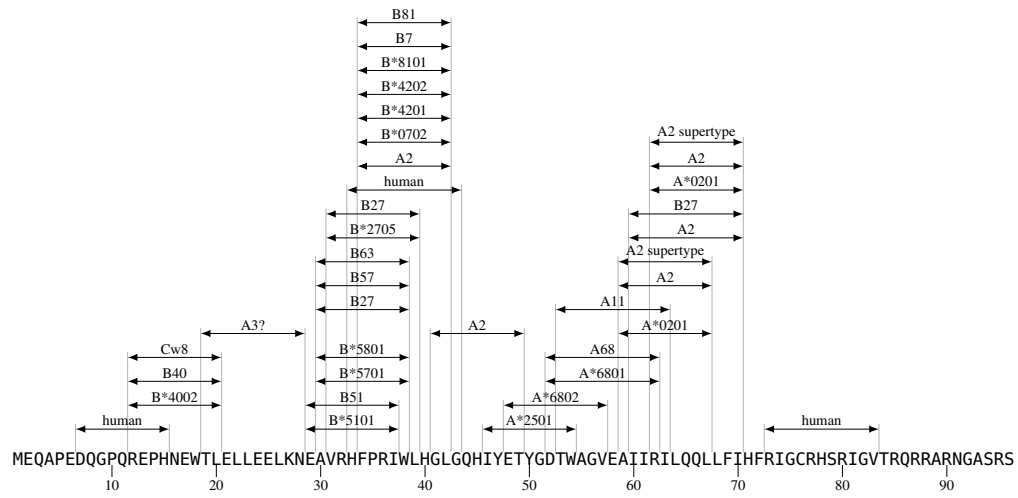


**Figure 22:** Vif CTL/CD8+ Map aa 101–192



## 4 Vpr CTL/CD8+ Epitope Map

**Figure 23:** Vpr CTL/CD8+ Map aa 1–96



## 5 Tat CTL/CD8+ Epitope Map

Figure 24: Tat CTL/CD8+ Map aa 1–100

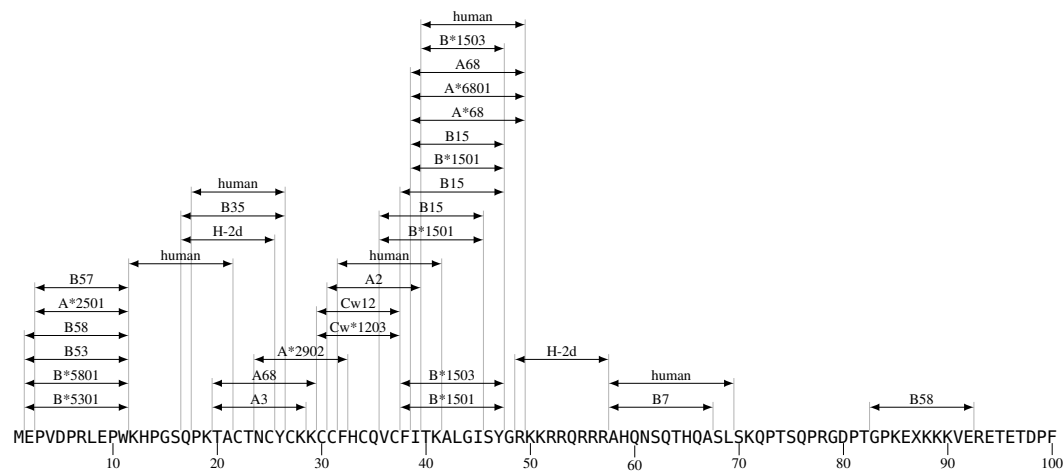


Figure 25: Tat CTL/CD8+ Map aa 101–101

D  
101



## 6 Rev CTL/CD8+ Epitope Map

Figure 26: Rev CTL/CD8+ Map aa 1–100

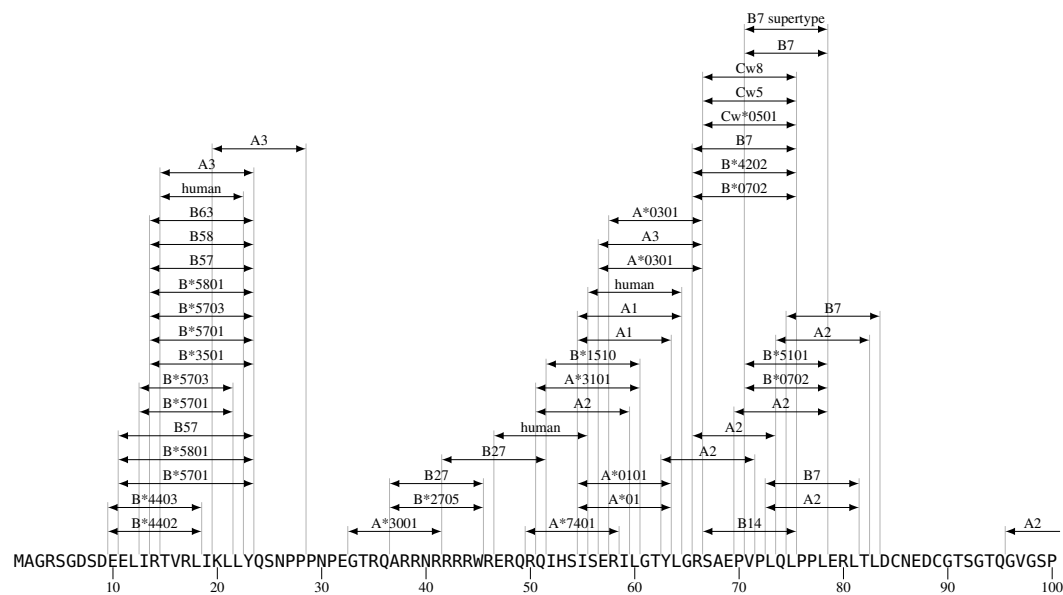
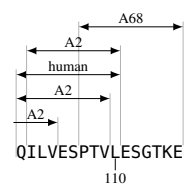
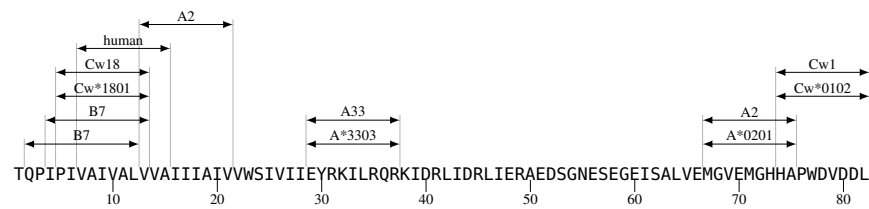


Figure 27: Rev CTL/CD8+ Map aa 101–116



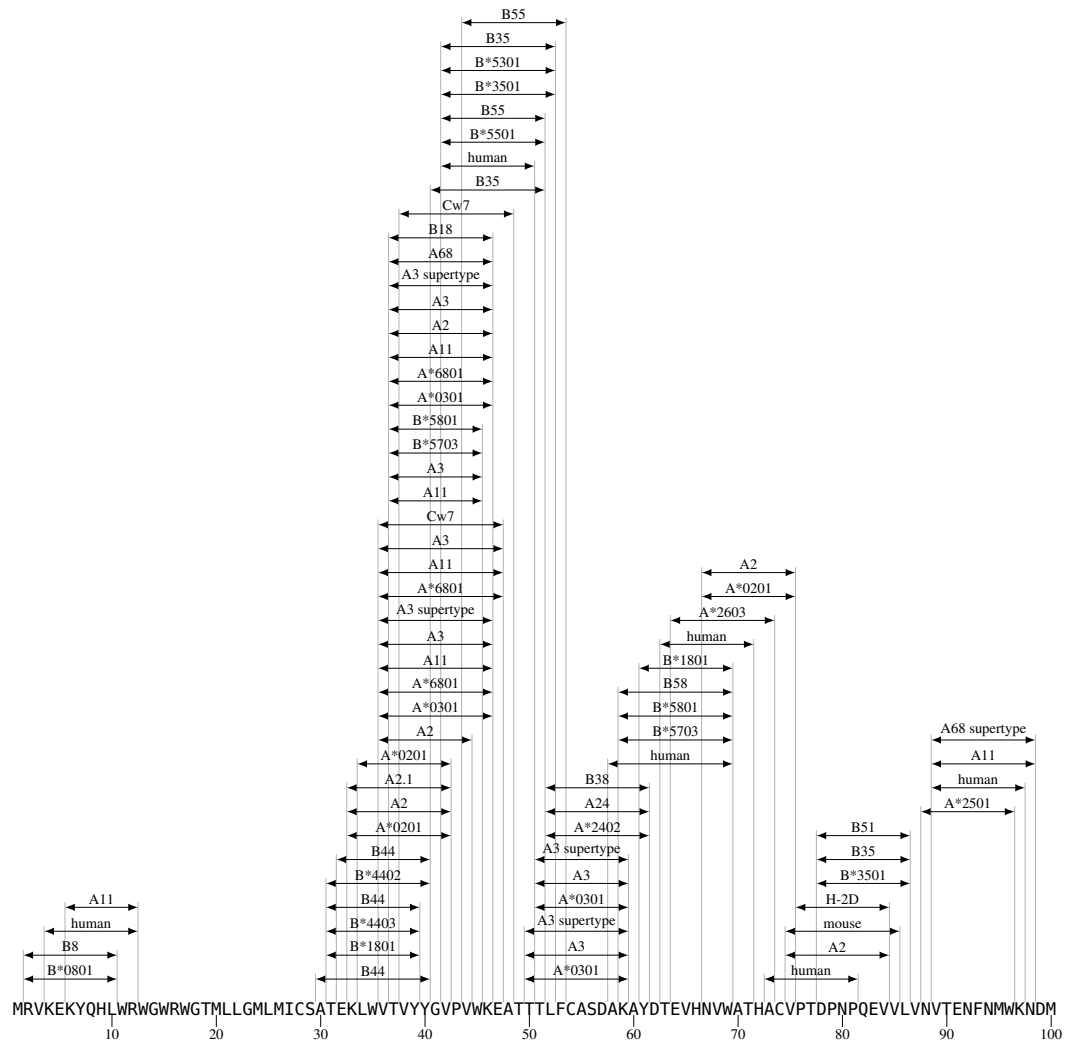
# 7 Vpu CTL/CD8+ Epitope Map

Figure 28: Vpu CTL/CD8+ Map aa 1–82

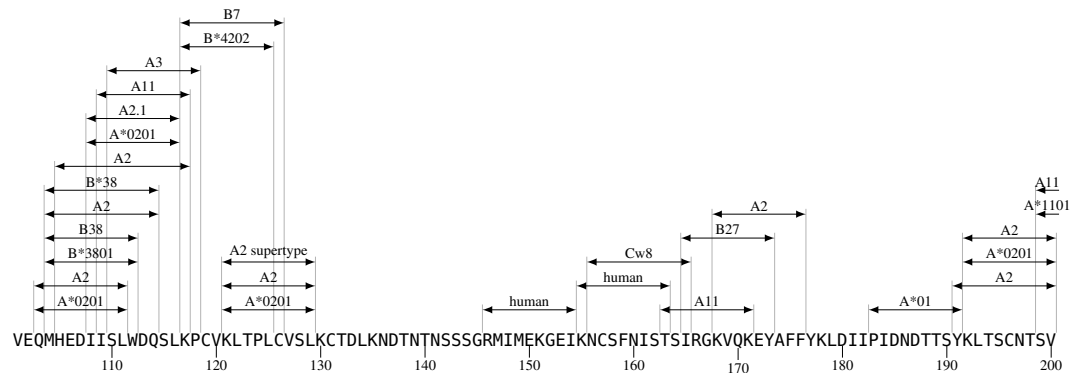


## 8 gp160 CTL/CD8+ Epitope Map

**Figure 29:** gp160 CTL/CD8+ Map aa 1–100



**Figure 30:** gp160 CTL/CD8+ Map aa 101–200



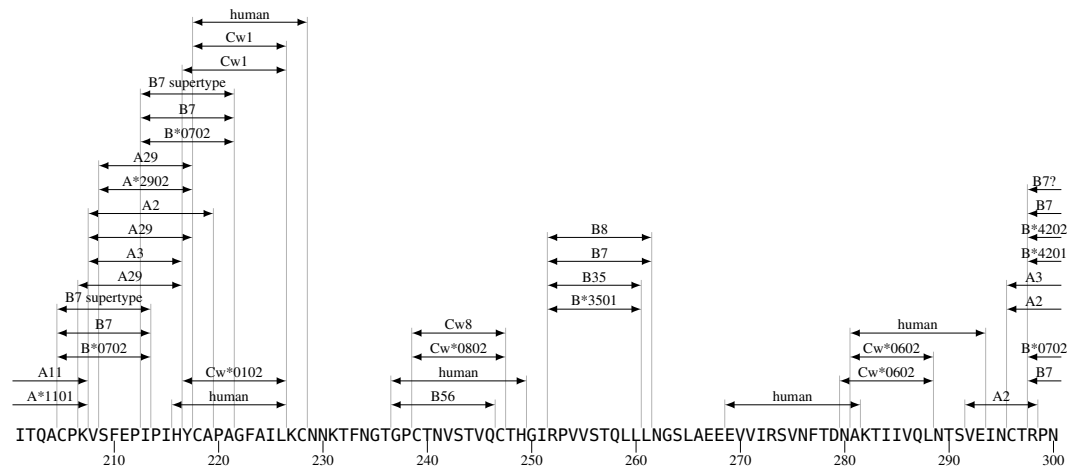
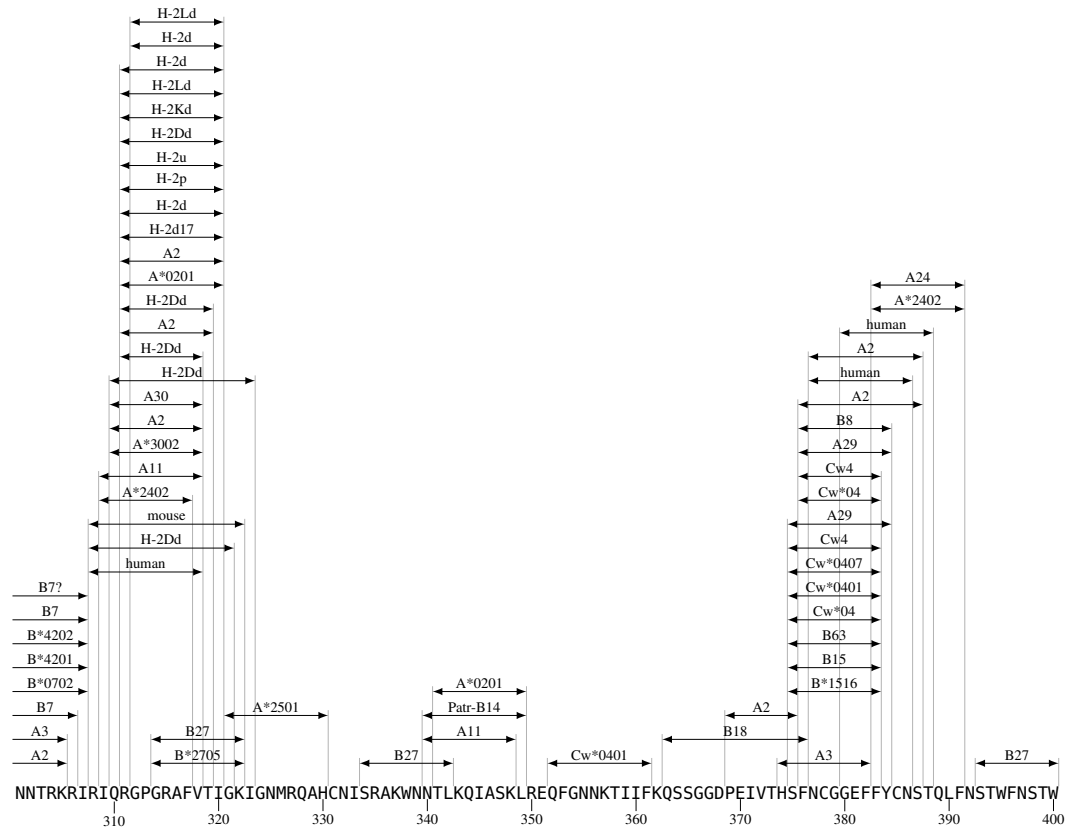
**Figure 31:** gp160 CTL/CD8+ Map aa 201–300**Figure 32:** gp160 CTL/CD8+ Map aa 301–400

Figure 33: gp160 CTL/CD8+ Map aa 401–500

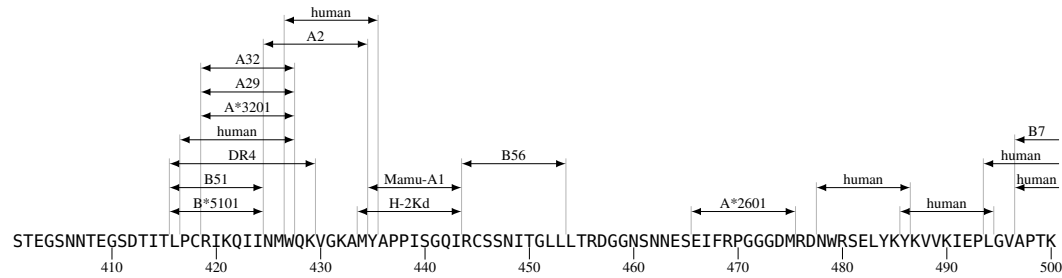


Figure 34: gp160 CTL/CD8+ Map aa 501–600

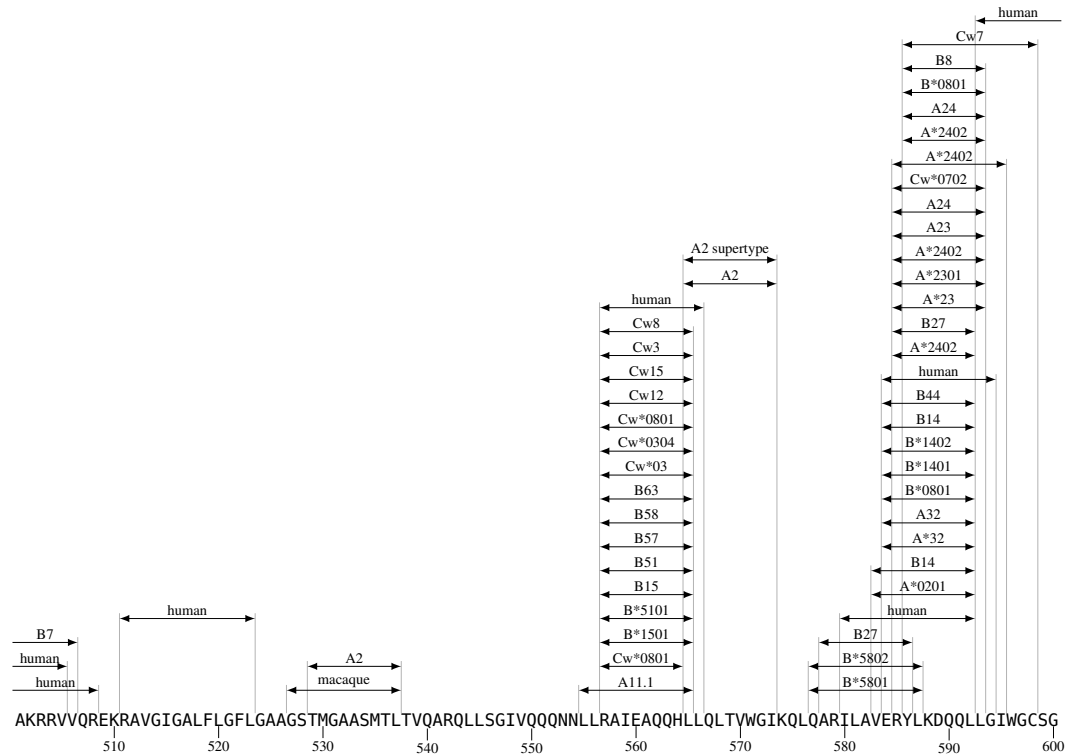
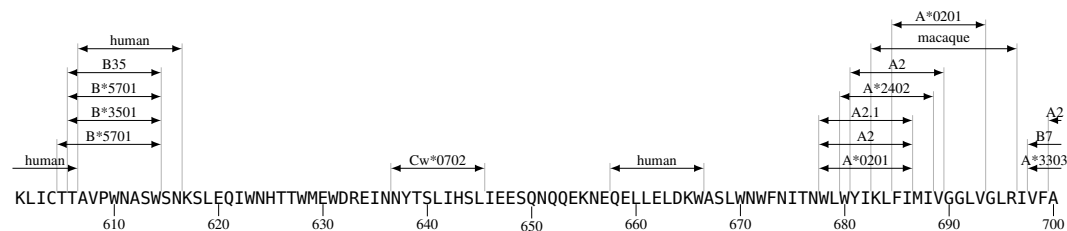
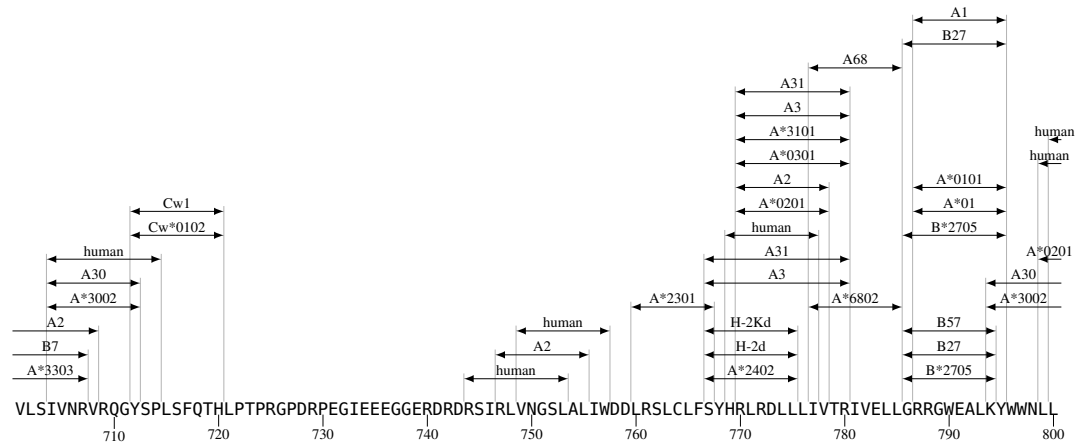


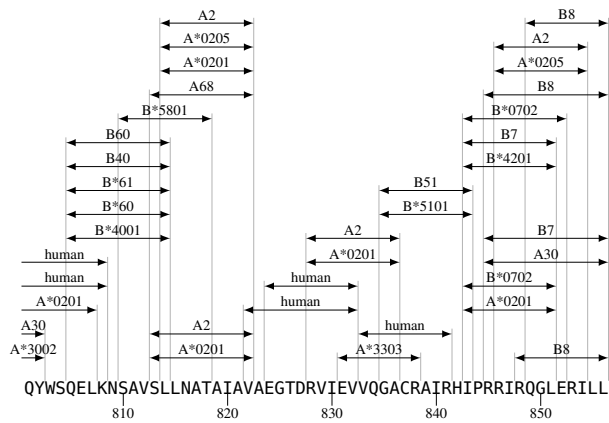
Figure 35: gp160 CTL/CD8+ Map aa 601–700



**Figure 36: gp160 CTL/CD8+ Map aa 701–800**



**Figure 37:** gp160 CTL/CD8+ Map aa 801–856



## 9 Nef CTL/CD8+ Epitope Map

**Figure 38:** Nef CTL/CD8+ Map aa 1–100 1/2

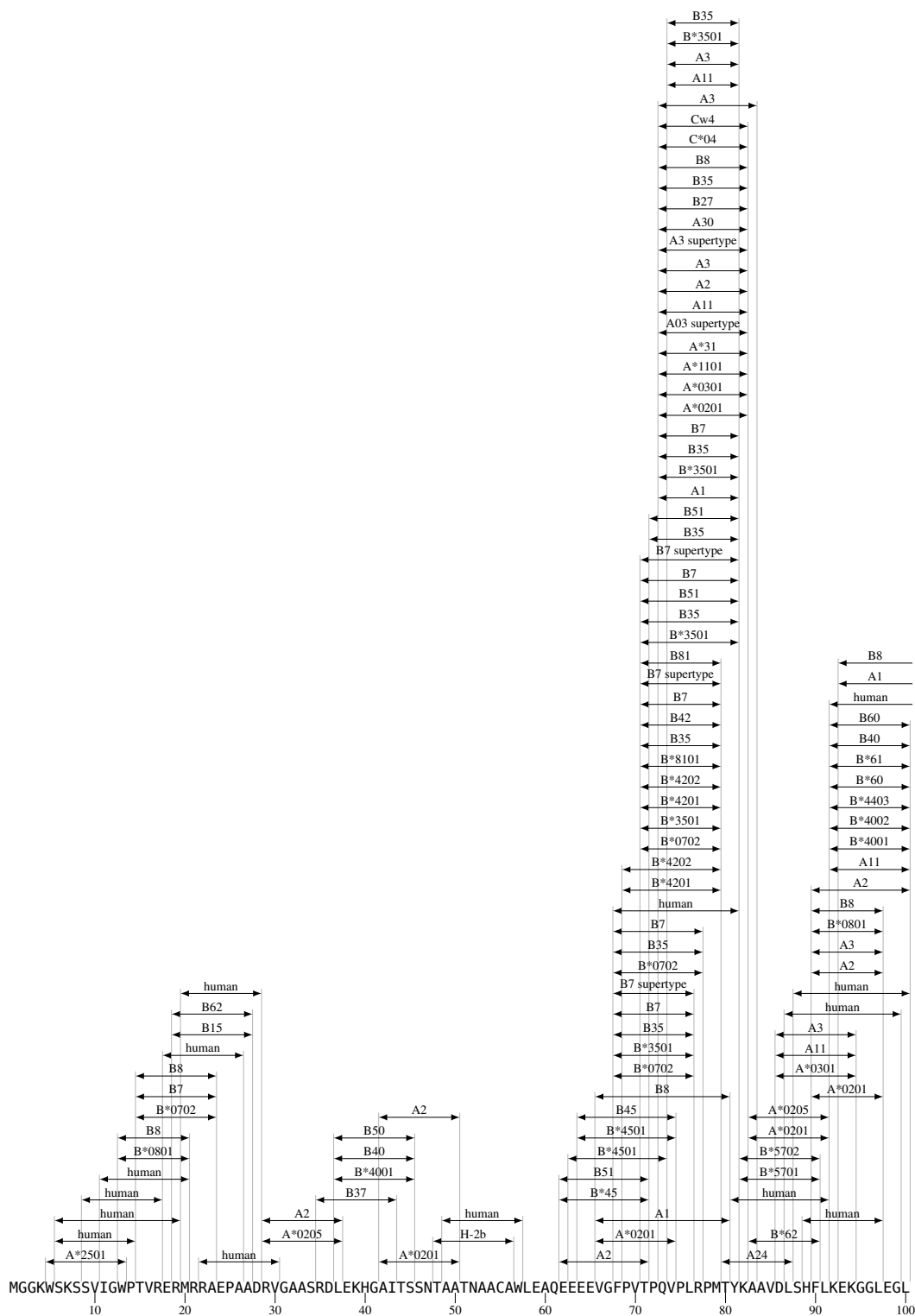


Figure 39: Nef CTL/CD8+ Map aa 1–100 2/2

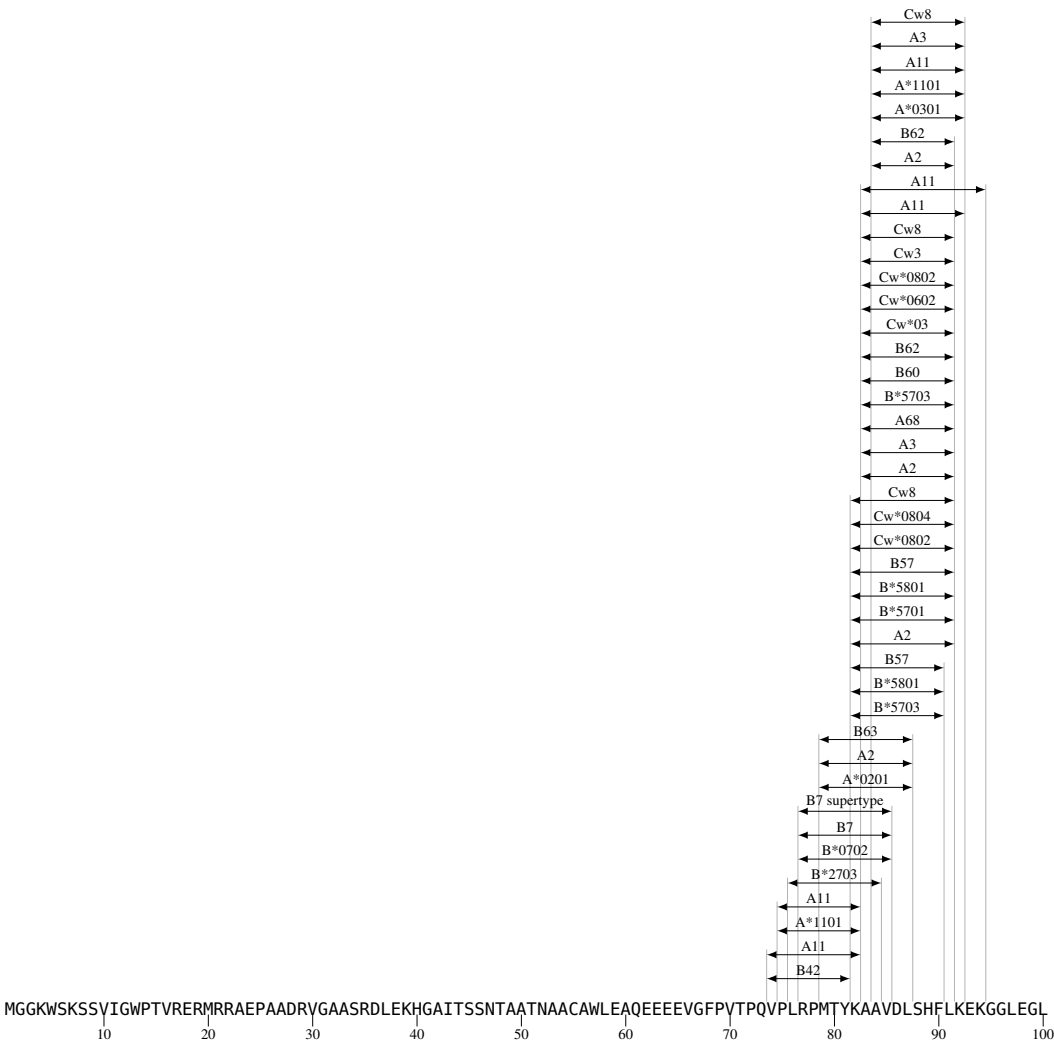
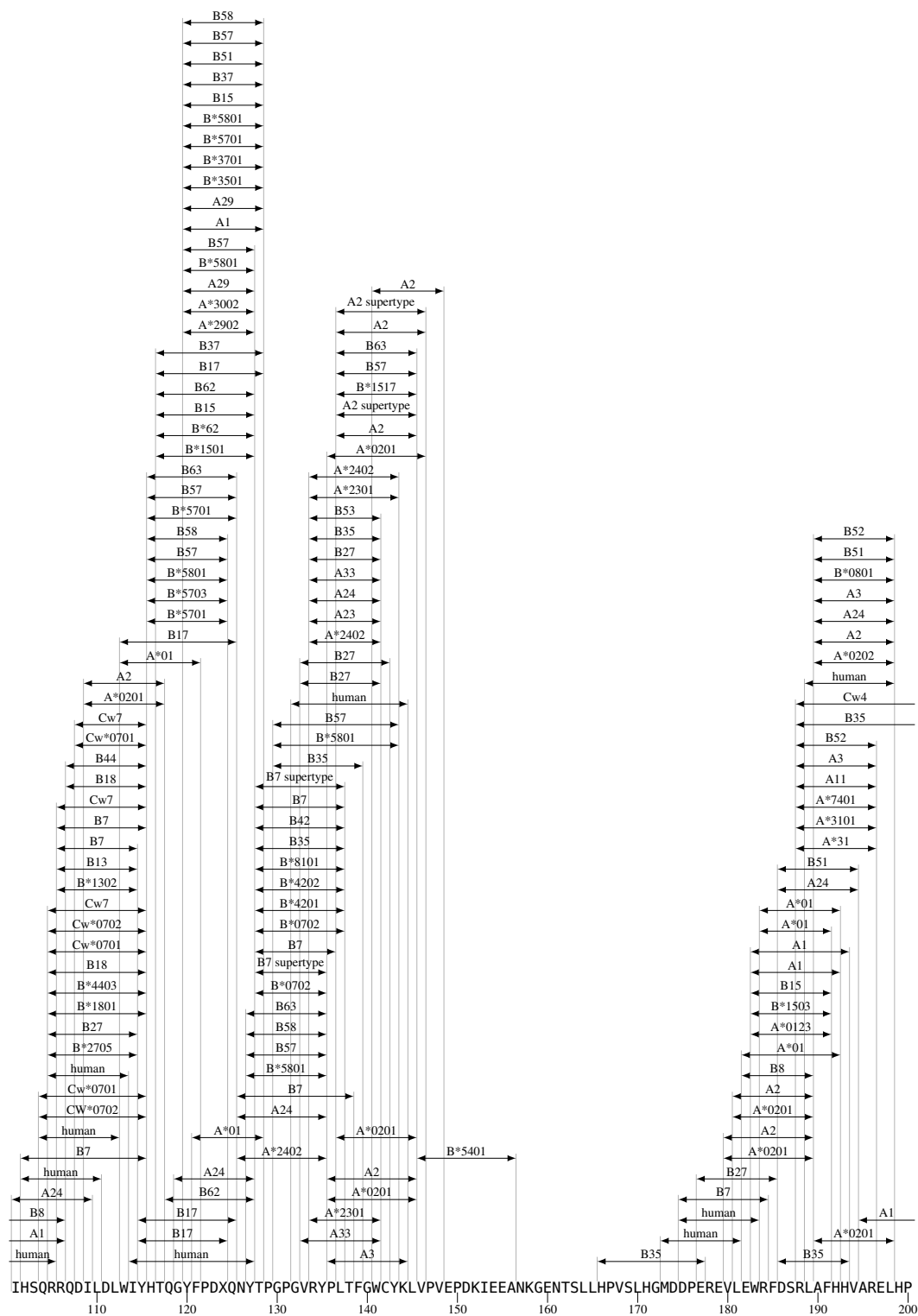
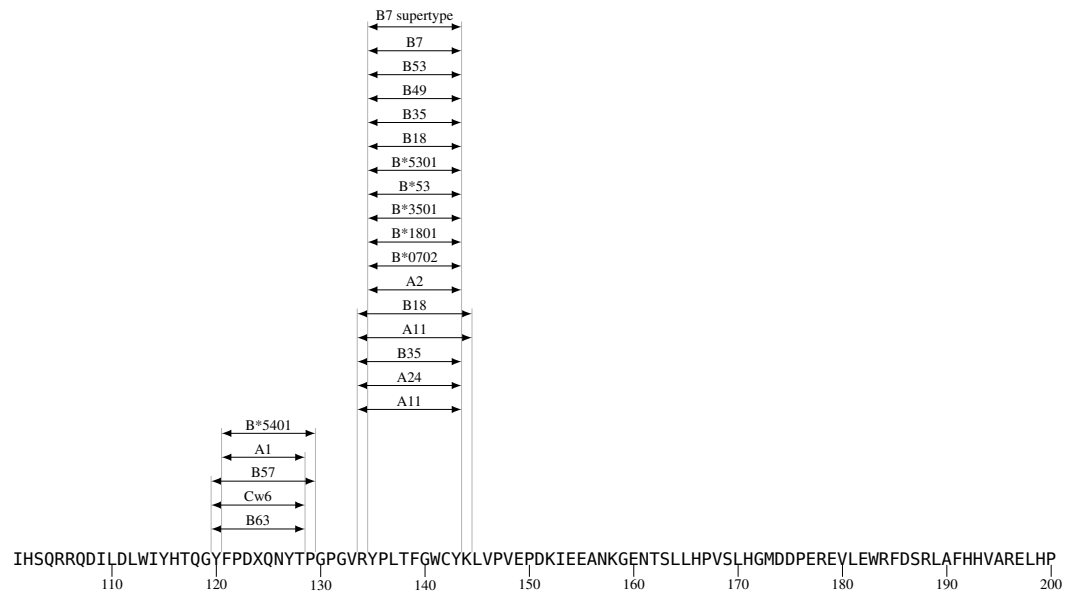




Figure 40: Nef CTL/CD8+ Map aa 101–200 1/2



**Figure 41:** Nef CTL/CD8+ Map aa 101–200 2/2



**Figure 42:** Nef CTL/CD8+ Map aa 201–206

